



# Full Line Catalog

Supplying over 3,000 food items to over 3,000 customers throughout the Mid-Atlantic and beyond!



**215-992-0900**

[www.quakervalleyfoods.com](http://www.quakervalleyfoods.com)  
[sales@quakervalleyfoods.com](mailto:sales@quakervalleyfoods.com)

**Important!**

Product availability and product numbers are subject to change.  
Please speak with your sales representative before placing your order.



Follow Us

**Delivering Personalized Service**

Since 1975

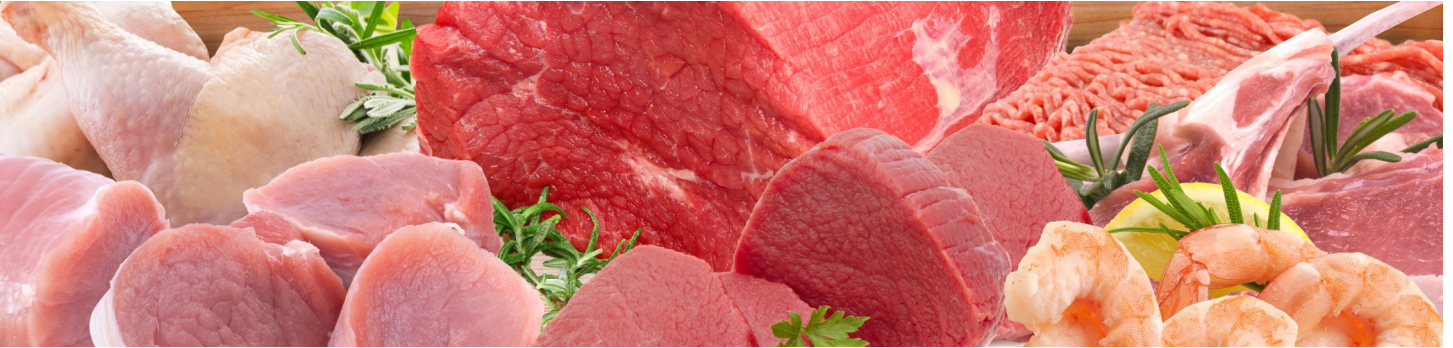




# Contents

| <b>Item</b>                                | <b>Page</b> |
|--|-------------|
| Welcome .....                              | 2           |
| Why Do Business with Us?.....              | 3           |
| Vendor Logos.....                          | 4           |
| <b>Beef – Domestic &amp; Imported.....</b> | <b>5</b>    |
| <b>Pork.....</b>                           | <b>10</b>   |
| Pork – Offal.....                          | 12          |
| <b>Chicken, Turkey &amp; Duck.....</b>     | <b>15</b>   |
| Chicken.....                               | 14          |
| Turkey.....                                | 17          |
| Duck .....                                 | 18          |
| <b>Lamb, Mutton &amp; Goat.....</b>        | <b>20</b>   |
| Goat.....                                  | 21          |
| Lamb.....                                  | 21          |
| Rabbit.....                                | 21          |
| Mutton .....                               | 22          |
| <b>Seafood .....</b>                       | <b>23</b>   |
| <b>Deli.....</b>                           | <b>30</b>   |
| Deli - Halal .....                         | 43          |

## Welcome to Quaker Valley Foods!



Quaker Valley Foods is a full-line food distributor, handling over 3,000 fresh and frozen perishable and non-perishable items.

We specialize in the distribution of Beef, Pork, Chicken, Turkey, Seafood, Deli Products, Food Service Items, Lamb, Goat, Mutton, Veal, and Ethnic Items.



Utilizing a fleet of over 40 vehicles, Quaker Valley Food services thousands of customers from Connecticut to Virginia. In order to best service our customers, we provide next day delivery—Monday through Saturday—to wholesalers, jobbers, independent retail and wholesale food stores, restaurants, and larger supermarket groups.



215-992-0900

[www.quakervalleyfoods.com](http://www.quakervalleyfoods.com)



## Why Do Business With Us?



- Pennsylvania-based, and Family Owned Since 1975
- Personalized, Dependable Service

- 24 Hour Turnaround: Order Up Until 5 pm for Next Day Delivery
- Hassle-Free, No-Fault Returns
- Customer pickup available



- Competitive Pricing Including Items to Support Your Ad
- We Stock Over 3,000 Items at All Times

- We Care About Your Business and Will Do All We Can to Help You Grow & Succeed!



Pat Veasey, President & Wayne Hudis, CEO

2701 Red Lion Road · Philadelphia, PA 19154

**Local, Regional and National Brands. Over 200 Vendors!**



# Beef

- All major primal and sub-primal cuts for retail and foodservice. We also offer Agnus and Halal beef!
- Grades—Prime, Choice, Select and No Roll
- Packers include IBP, National, Excel, American Foods, JBS, Elkhorn Valley Packing, Nicholas Packing, Upper Iowa, SuKarne, Gusi, Don Saul
- All varieties of offal



## Available Beef Products

|                         |                      |                    |
|-------------------------|----------------------|--------------------|
| Ribeyes                 | Semi-Boneless Chuck  | Beef Back Ribs     |
| Export Ribs             | 2 Pc. Boneless Chuck | Short Ribs         |
| Short Loins             | Chuck Roll           | Bone-In Hind Shank |
| Top Butts               | Chuck Tenders        | Hanging Tenders    |
| Strip Loins             | Briskets             | Bottom Round Flat  |
| Flat Irons              | Nose Off Briskets    | Eye Round          |
| Peeled Tenderloins      | Neck Bones           | Flat Round         |
| Teres Major             | Outside Skirts       | Ground Beef        |
| Peeled Butt Tenderloins | Flanks               | Insides            |
| Shoulder Clods          | Flap Meat            | Peeled Knuckles    |

## Offal

|                      |
|----------------------|
| Oxtails              |
| Leg Tendons          |
| Intestines           |
| Beef Bones           |
| Beef Tongues         |
| Tripe                |
| Beef Feet            |
| Burnt Feet           |
| Beef Trimmings 50/50 |
| Grinding Meat        |

## Beef—Domestic & Imported

### Rib Eyes—Boneless



| Description              | Item No. |
|--------------------------|----------|
| IBP Choice               | 3105125  |
| Heartland Angus          | 3108655  |
| National Beef Select     | 3101134  |
| National Beef No Roll    | 3101135  |
| Don Saul Mexican 6-piece | 3135353  |

### Export Ribs—Bone In



| Description               | Item No. |
|---------------------------|----------|
| IBP Choice                | 3105124  |
| Upper Iowa Angus Choice   | 3100953  |
| IBP Select                | 3105424  |
| Don Saul (Mexico) 4-Piece | 3135320  |

### Short Loins



| Description                  | ItemNo. |
|------------------------------|---------|
| IBP Choice 0x1               | 3105136 |
| IBP Select 0x1               | 3108185 |
| Upper Iowa 0x1 Angus Choice  | 3107403 |
| Don Saul 0x1 Mexican 2-Piece | 3115332 |

### Top Butts



| Description                      | Item No. |
|----------------------------------|----------|
| National Beef Choice XT          | 3104775  |
| National Beef Select XT          | 3104475  |
| National Beef No Roll            | 3106414  |
| Elkhorn Valley No Roll Angus XT  | 3103820  |
| Upper Iowa Choice XT             | 3103818  |
| Don Saul (Mexico) Fresh, 4 piece | 3135355  |

### Strip Loins



| Description                 | Item No. |
|-----------------------------|----------|
| IBP Choice 0x1              | 3105120  |
| IBP Select 0x1              | 3105501  |
| Heartland Angus 0x1         | 3108195  |
| Upper Iowa 0x1 Angus Choice | 3107121  |
| EVP Angus No Roll 0x1       | 3104068  |
| SuKarne 0x1 Mexican         | 3135138  |

### Flat Irons



| Description             | Item No. |
|-------------------------|----------|
| JBS Clear River No Roll | 3109009  |
| Swift Choice Top Blade  | 3107186  |
| Swift Select Top Blade  | 3104455  |

### Peeled Tenderloins (PSMO)



| Description                | Item No. |
|----------------------------|----------|
| IBP Choice 5+              | 3105108  |
| Heartland Angus No Roll 5+ | 3106555  |
| Long Prairie Cow 5+        | 3103307  |
| SuKarne (Mexican) 5+       | 3130052  |

### Teres Major



| Description     | Item No. |
|-----------------|----------|
| Elk Horn Valley | 3116114  |

### Chuck Clods



| Description             | Item No. |
|-------------------------|----------|
| National Choice         | 3109015  |
| National Choice XT      | 3103204  |
| National Select XT      | 3103503  |
| Upper Iowa Angus Choice | 3101403  |

### Peeled Butt Tenderloins

| Description                  | Item No. |
|------------------------------|----------|
| National Beef Choice 2 pc.   | 3118166  |
| National Beef Select 2-Piece | 3118165  |
| National Beef No Roll 2 pc.  | 3103306  |
| Don Saul Mexico, Fresh       | 3135318  |





## Beef—Domestic & Imported

### Semi-Boneless Chuck



| Description     | Item No. |
|-----------------|----------|
| IBP Choice      | 3105101  |
| IBP No Roll     | 3105004  |
| IBP Select      | 3105301  |
| National Choice | 3109122  |
| National Select | 3109322  |

### Beef Neck Bones



| Description               | Item No. |
|---------------------------|----------|
| 5 Star, fresh             | 3109815  |
| Upper Iowa, Frozen        | 3210108  |
| Don Saul, Mexican, Frozen | 3205271  |

### 2 Pc. Boneless Chucks



| Description                  | Item No. |
|------------------------------|----------|
| Elkhorn Valley No Roll Angus | 3103102  |



### Outside Skirts

| Description             | Item No. |
|-------------------------|----------|
| American No Roll Peeled | 3103242  |
| SuKarne, Mexican        | 3135146  |

### Chuck Roll



| Description              | Item No. |
|--------------------------|----------|
| National Beef No Roll    | 3106331  |
| National Beef Choice     | 3104331  |
| National Beef Select     | 3104306  |
| Upper Iowa Angus Choice  | 3101613  |
| Don Saul Mexican 4-piece | 3135368  |

### Flanks



| Description              | Item No. |
|--------------------------|----------|
| National Beef Choice     | 3103143  |
| Nicholas Xtra Trim Rough | 3107439  |

### Chuck Tenders



| Description             | Item No. |
|-------------------------|----------|
| IBP Choice              | 3105139  |
| Upper Iowa Angus Choice | 3101623  |
| National Choice         | 3103163  |

### Flap Meat



| Description                     | Item No. |
|---------------------------------|----------|
| Upper Iowa Sirloin Angus Choice | 3108513  |
| Don Saul Mexican, Fresh         | 3135322  |

### Briskets



| Description                   | Item No. |
|-------------------------------|----------|
| Elk Horn Valley No Roll Angus | 3107179  |
| IBP Choice                    | 3105144  |
| National Choice               | 3102139  |

### Nose Off Briskets



| Description          | Item No. |
|----------------------|----------|
| National Beef Choice | 3109019  |
| IBP Choice           | 3105141  |

## Beef—Domestic & Imported

### Beef Back Ribs



| Description      | Item No. |
|------------------|----------|
| Excel No Roll    | 3204379  |
| Circle T Utility | 3205050  |
| EVP Meaty        | 3225124  |
| Nicholas Utility | 3208006  |

### Short Ribs



| Description                         | Item No. |
|-------------------------------------|----------|
| National Beef Choice Bone-In, Chuck | 3104345  |
| National Beef Choice 9" Plate       | 3106344  |
| IBP Boneless Chuck                  | 3105149  |
| Upper Iowa Angus Choice Chuck       | 3113003  |
| Nicholas Utility 3 Bone             | 3107258  |
| Nicholas Utility 4 Bone             | 3107257  |

### Bone-In Hind Shank



| Description             | Item No. |
|-------------------------|----------|
| Elkhorn Valley No Roll  | 3105014  |
| Upper Iowa Angus Choice | 3106015  |

### Heel Meat

| Description | Item No. |
|-------------|----------|
| American    | 3104815  |



### Hanging Tender



| Description | Item No. |
|-------------|----------|
| EVP Peeled  | 3101226  |

### Eye Round



| Description      | Item No. |
|------------------|----------|
| National Choice  | 3105300  |
| National Select  | 3102135  |
| National No Roll | 3108210  |

### Ground Beef



| Description               | Item No. |
|---------------------------|----------|
| National 81/19 Fine Grind | 3107218  |

\*Frozen Ground Beef Available.

### Bottom Round Flat



| Description                | Item No. |
|----------------------------|----------|
| IBP Choice ¼"              | 3105131  |
| IBP No Roll ¼"             | 3105331  |
| National Beef Choice ¼"    | 3106131  |
| National Beef Select ¼"    | 3109313  |
| Upper Iowa Angus Choice ¼" | 3107123  |
| National Beef No Roll ¼"   | 3109314  |

### Insides



| Description                  | Item No. |
|------------------------------|----------|
| IBP Choice                   | 3105128  |
| IBP Choice XT                | 3105127  |
| IBP No Roll                  | 3105327  |
| National Beef Choice Denuded | 3109006  |
| Upper Iowa Angus Choice XT   | 3106813  |
| National Choice Cap Off      | 3103468  |

### Peeled Knuckles



| Description             | Item No. |
|-------------------------|----------|
| National Beef Choice    | 3105858  |
| Upper Iowa Angus Choice | 3106713  |
| EVP Angus No Roll       | 3106557  |

## Beef—Domestic & Imported

### Oxtails

| Description                    | Item No. |
|--------------------------------|----------|
| National Beef Fresh Oxtails    | 3103401  |
| IBP Frozen Oxtail              | 3201004  |
| Excel Frozen Oxtail            | 3201003  |
| 4 Star Frozen Cow Oxtails      | 3204105  |
| Upper Iowa Angus Choice, fresh | 3102005  |
| FPL Cow Tails, Frozen          | 3204114  |
| EVP Trimmed, Frozen            | 3291791  |
| Nicholas Cow Oxtails           | 3201022  |
| AFFCO New Zealand, Frozen      | 3204130  |



### Leg Tendons

| Description                    | Item No. |
|--------------------------------|----------|
| Nicholas Flexor Frozen         | 3201050  |
| JBS Beef Hind Leg frozen       | 2287817  |
| Myriad Cooked Beef Tendon Ball | 3283661  |



### Intestines

| Description   | Item No. |
|---------------|----------|
| National Beef | 3201843  |

### Beef Bones

| Description                      | Item No. |
|----------------------------------|----------|
| IBP Center Cut, 40 lb.           | 3209006  |
| Nicholas 3-Piece Cut, 60lb.      | 3210044  |
| Nicholas Center Cut Femur 60 lb. | 3203334  |
| Liffey Center Cut Femur, Frozen  | 3201313  |



### #1 Beef Tongues

| Description             | Item No. |
|-------------------------|----------|
| 4 Star Black            | 3202002  |
| Nicholas White Cow      | 3208010  |
| 4 Star White            | 3218010  |
| Nicholas Black          | 3208020  |
| Liffey Irish 1 pc. Cryo | 3214010  |
| Affco Veal              | 3233779  |
| Affco Steer             | 3247075  |



### Tripe



| Description                 | Item No. |
|-----------------------------|----------|
| IBP Honeycomb               | 3214004  |
| 3-3-3 Honeycomb, 20 lb.     | 3214114  |
| 3-3-3 Omasum, 20 lb.        | 3214104  |
| 3-3-3 Scalded, 44 lb.       | 3214103  |
| Nicholas Scalded Bleached   | 3211250  |
| Nicholas Honeycomb Bleached | 3211616  |
| 4 Star Scalded              | 3214102  |

### Beef Feet



| Description                 | Item No. |
|-----------------------------|----------|
| IBP                         | 3215004  |
| American                    | 3215010  |
| Cut Frozen White            | 3209330  |
| Carnic White Nicaraguan     | 3210111  |
| Southeastern Frozen         | 3215055  |
| Rumba Mexican Frozen Retail | 3215151  |

### Burnt Feet



| Description       | Item No. |
|-------------------|----------|
| Better Beef       | 3215053  |
| St. Helens Canada | 3215054  |

### Beef Trimmings



| Description              | Item No. |
|--------------------------|----------|
| IBP 50/50                | 3202004  |
| Flank Trim Rose          | 3210124  |
| Excel 50/50 Frozen       | 3210409  |
| LT Ute Cheek Meat        | 3209005  |
| 4 Star Frozen Cheek Meat | 3217003  |

### Grinding Meat



| Description              | Item No. |
|--------------------------|----------|
| Australian 85% AF/CHU    | 3217002  |
| Australian 95% Bull Meat | 3217005  |
| Nicaraguan 95% Bull Meat | 3217008  |

**Pork**

# Pork

- Fresh and frozen primal cuts
- Packers include Smithfield, Indiana, Tyson, Seaboard, Daisyfield, Hatfield and Leidy's
- All varieties of offal



## Available Pork Products

## Offal

|                    |                          |            |              |
|--------------------|--------------------------|------------|--------------|
| Bone-In Loins      | Spare Ribs               | Feet       | Kidneys      |
| Boneless Loins     | Salted Parts             | Tails      | Chitterlings |
| Tenders            | Smoked Parts             | Neck Bones | Stomachs     |
| Picnics            | Frozen Whole Pigs        | Hocks      | Hearts       |
| Hams               | Majesty 10# Danish Ribs  | Jowls      | Tongues      |
| Boneless & Bone-In | Back Ribs                | Ears       | Snoots       |
| Butts              | Bellies (Fresh & Frozen) | Livers     | Salted Feet  |

**Bone-In Loins**



| Description | Item No. |
|-------------|----------|
| IBP Medium  | 2103131  |
| Smithfield  | 2111101  |
| Indiana     | 2118413  |
| Seaboard    | 2131325  |
| Seaboard CC | 2107304  |

**Tenderloins**



| Description | Item No. |
|-------------|----------|
| Smithfield  | 2216815  |
| Hatfield    | 2101503  |
| IBP         | 2104783  |

**Boneless Loins Center Cut**



| Description        | Item No. |
|--------------------|----------|
| IBP                | 2101424  |
| Smithfield         | 2180127  |
| Seaboard           | 2107304  |
| Think pork chop CC | 2201630  |
| Hatfield CC        | 2201032  |

**Spare Ribs**



| Lite        |          |
|-------------|----------|
| Description | Item No. |
| Seaboard    | 2104109  |
| Smithfield  | 2105300  |
| IBP         | 2102213  |
| Indiana     | 2122009  |

**Medium**

| Description | Item No. |
|-------------|----------|
| Seaboard    | 2114609  |
| Smithfield  | 2170646  |
| IBP         | 2104027  |
| Indiana     | 2104131  |

**Danish**

| Description          | Item No. |
|----------------------|----------|
| Aunt Bessie, 10 lbs. | 2204214  |
| Majesty, 10 lbs.     | 2204211  |

**Picnics**



| Description                 | Item No. |
|-----------------------------|----------|
| Leidy Bone-In               | 2132043  |
| Indiana Bone-In             | 2102104  |
| USA Bone-In (Paper Wrapped) | 2106175  |
| Smithfield Bone-In          | 2118050  |
| Hatfield Bone-In            | 2105700  |
| Hylife Boneless             | 2114119  |
| Seaboard Cushion Meat       | 2128053  |

**Pork Butts**



| Bone-In     |          |
|-------------|----------|
| Description | Item No. |
| Indiana     | 2104505  |
| Smithfield  | 2101789  |
| Leidy       | 2132026  |
| Boneless    |          |
| Description | Item No. |
| IBP CT      | 2105604  |
| Hylife CT   | 2115117  |
| Hylife      | 2115311  |
| Leidy       | 2132026  |
| Smithfield  | 2105507  |
| Seaboard    | 2124166  |
| Indiana     | 2105205  |

**Back Ribs**



**Frozen**

| Description   | Item No. |
|---------------|----------|
| Hatfield      | 2201240  |
| Indiana       | 2219915  |
| Hylife        | 2287113  |
| Swift 6/3 pc. | 2261960  |
| Smithfield    | 2270858  |
| IBP           | 2214889  |

**Fresh**

| Description | Item No. |
|-------------|----------|
| Smithfield  | 2170858  |

**St. Louis Ribs - Frozen**

| Description | Item No. |
|-------------|----------|
| 98 Packing  | 2204506  |
| Daisyfield  | 2214067  |
| Aunt Bessie | 2215299  |



**Bellies**

**Fresh**

| Description               | Item No. |
|---------------------------|----------|
| Daisy Rind On             | 2107292  |
| Daisy Rib Bone in Rind on | 2107201  |
| Hylife Rind Off           | 2122640  |

**Frozen**

| Description                | Item No. |
|----------------------------|----------|
| Costa Brava Rind Off       | 2211450  |
| Costa Brava Rind On        | 2211464  |
| Skiba BNLS Rind On         | 2211804  |
| Hylife BNLS Rind Off       | 2222640  |
| Keken BNLS Rind Off        | 2229553  |
| Leidy Sweet Pickled        | 4225010  |
| Auroa Bone in Belly        | 2212497  |
| Skiba Billy Bone in Belly  | 2211833  |
| Keken Bone in Belly        | 2229553  |
| Hylife Billy Bone in Belly | 2122640  |

**Sausage**

**Italian**

| Description | Item No. |
|-------------|----------|
| Hot Link    | 2109204  |
| Sweet Link  | 2109205  |
| Sweet Rope  | 2109206  |
| Hot Rope    | 2109207  |

**Breakfast**

| Description          | Item No. |
|----------------------|----------|
| Fresh 1 oz.          | 2109202  |
| Fresh 2 oz.          | 2109201  |
| Frozen 2 oz. Patties | 2209203  |

**Ethnic**

| Description     | Item No. |
|-----------------|----------|
| Leidy Andouille | 2103010  |
| Leidy Chorizo   | 4119309  |

**Hams**


| Description                 | Item No. |
|-----------------------------|----------|
| Indiana Fresh Bone-In 20/23 | 2100905  |
| Leidy Fresh Bone-In         | 2162008  |
| Seaboard                    | 2112426  |
| Hatfield                    | 2104114  |
| Leidy BRT                   | 2101104  |

**Pork—Offal**
**Pigs Feet: Frozen**


| Description          | Item No. |
|----------------------|----------|
| Hatfield Lacone      | 2201924  |
| Conestoga Lacone     | 2213019  |
| Smithfield Lacone    | 2232046  |
| IBP Front Feet       | 2210619  |
| Seaboard Front Feet  | 2222101  |
| Seaboard Hind Feet   | 2202354  |
| Hormel Hind Feet     | 2203170  |
| USA Hind Feet        | 2206260  |
| Daisyfield Hind Feet | 2207799  |
| IBP Hind Feet        | 2203170  |
| Daisyfield Salted    | 2207787  |
| Daisyfield Long Cut  | 2207789  |

**Smoked Hams**

| Description            | Item No. |
|------------------------|----------|
| Daisy 17/20            | 2221130  |
| Daisyfield Picnic      | 2307004  |
| Southampton Cloth      | 2317012  |
| Hatfield Picnic        | 2307005  |
| Hatfield Country Style | 2315005  |



## Pork—Offal

### Tails



| Description          | Item No. |
|----------------------|----------|
| Leidy                | 2207008  |
| Smithfield           | 2221865  |
| Smithfield Tray Pack | 2222759  |
| Hatfield Salted      | 2207005  |

### Ears

| Description | Item No. |
|-------------|----------|
| Hatfield    | 2201272  |
| Seaboard    | 2290612  |



### Livers: Frozen



| Description | Item No. |
|-------------|----------|
| Daisyfield  | 2200705  |
| Hatfield    | 2201138  |

### Bones



| Description        | Item No. |
|--------------------|----------|
| Seaboard Neck      | 2105414  |
| USA Neck           | 2106155  |
| Indiana Neck       | 2112903  |
| Ferris Smoked Neck | 2224456  |
| Daisy Smoked Neck  | 2207006  |
| IBP Neck           | 2101919  |
| Hatfield Chine     | 2211127  |
| Leidy Chine        | 2281061  |
| Oviande Femur      | 2223801  |
| A&R Smoked         | 2210430  |

### Kidneys: Frozen



| Description | Item No. |
|-------------|----------|
| Hatfield    | 2201141  |

### Chitterlings: Frozen



| Description           | Item No. |
|-----------------------|----------|
| Aunt Bessie 9/5 lbs.  | 2200115  |
| IBP 6/10 lbs.         | 2200505  |
| Audies 6/5 lbs. Bag   | 2200555  |
| Danish Crown 9/5 lbs. | 2213630  |

### Hocks



| Description  | Item No. |
|--------------|----------|
| Daisy Smoked | 2201004  |
| Daisy Frozen | 2200112  |

### Chitterlings: Cooked

| Description            | Item No. |
|------------------------|----------|
| Global Delights 28oz   | 4210282  |
| Global Delights 5 lbs. | 4210283  |



### Jowls: Frozen



| Description  | Item No. |
|--------------|----------|
| Indiana      | 2201150  |
| JBS          | 2249940  |
| Sioux Preme  | 2202382  |
| Daisy Smoked | 2210241  |
| Leidy        | 2281054  |

### Stomachs: Frozen



| Description | Item No. |
|-------------|----------|
| Hatfield    | 2200903  |
| Aunt Bessie | 2200915  |
| Swift       | 2290140  |
| Sioux Preme | 2202520  |
| Indiana     | 2219207  |
| Daisyfield  | 2220612  |

**Pork—Offal**
**Whole Pig:  
Frozen**


| Description       | Item No. |
|-------------------|----------|
| 10/20 lbs.        | 2209200  |
| 20/30 lbs.        | 2205014  |
| 30/35 lbs.        | 2203035  |
| 30/40 lbs.        | 2225030  |
| 35/40 lbs.        | 2205011  |
| 40/50 lbs.        | 2205017  |
| 50/60 lbs.        | 2205018  |
| 60/70 lbs.        | 2205021  |
| 70/80 lbs.        | 2225020  |
| 80/90 lbs.        | 2225013  |
| 90/100 lbs.       | 2225015  |
| 100/100 lbs.      | 2225012  |
| 110/120 lbs.      | 2221020  |
| 110/130 lbs.      | 2225016  |
| 110/119 lb. Boxed | 2205878  |

**Trimmings**


| Description            | Item No. |
|------------------------|----------|
| IBP Coarse Ground, 80% | 2200249  |
| Smithfield, 72%        | 2171580  |
| Pork Packer, 72%       | 226042   |

**Hearts**


| Description        | Item No. |
|--------------------|----------|
| Daisyfield 50 lbs. | 2207798  |
| Seaboard 30 lbs.   | 2201411  |
| Hatfield           | 2203013  |

**Tongues**


| Description              | Item No. |
|--------------------------|----------|
| Swift, Unscalded, Tip On | 2290430  |
| IBP Unscalded            | 2221529  |
| Hatfield                 | 2200503  |
| Swift                    | 2290403  |

**Bung**


| Description | Item No. |
|-------------|----------|
| IBP         | 22215919 |
| Smithfield  | 2217328  |
| Swift       | 2291690  |

**Pork Blood**


| Description | Item No. |
|-------------|----------|
| USA         | 2223111  |

**Fatback Back**


| Description      | Item No. |
|------------------|----------|
| Smithfield       | 2108109  |
| Daisy Rindless   | 2207289  |
| Olymel           | 2203721  |
| Daisy Salted     | 2207788  |
| Bonavista Salted | 2207767  |

**Uteri**


| Description  | Item No. |
|--------------|----------|
| Leidy        | 2211909  |
| IBP          | 2211909  |
| Indiana      | 2247715  |
| Leidy Spleen | 2291059  |

**Snouts**


| Description | Item No. |
|-------------|----------|
| LBP         | 2205419  |
| Leidy       | 2291120  |



215-992-0900

[www.quakervalleyfoods.com](http://www.quakervalleyfoods.com)



## Chicken, Turkey & Duck

### Chicken, Turkey & Duck

- Our selection of products includes fresh and frozen whole Chicken parts
- Quaker Valley also offers whole Turkeys and Turkey parts, ducks in a variety of sizes, Quail and Cornish hens
- Halal Chickens and Turkeys available as well



#### Available Poultry Products

|                 |                        |                         |
|-----------------|------------------------|-------------------------|
| Whole Birds     | Chicken Paws           | Bone-In Chicken Breast  |
| Fowl            | Boneless Thighs        | Boneless Chicken Breast |
| Chicken Legs    | Cornish Hens           | Smoked Turkey Parts     |
| Chicken Wings   | Chicken Backs          | Turkey Breasts          |
| Chicken Tenders | Skinless Chicken Necks | Ground Turkey           |
| Party Wings     | Chicken Livers         | Ducks                   |
| ¼ Legs          | Chicken Gizzards       | Quail                   |
| Drumsticks      | Chicken Hearts         | Turkey Parts            |
| Thighs          | Frozen Whole Turkeys   |                         |

2701 Red Lion Road · Philadelphia, PA 19154

**Breasts**
**Bone-In**


| Description    | Item No. |
|----------------|----------|
| Perdue         | 1112109  |
| Cookin' Good   | 1144104  |
| Pilgrims Whole | 1154483  |

**Boneless**


| Description                     | Item No. |
|---------------------------------|----------|
| George's                        | 1104941  |
| Pilgrim's (Small)               | 1110695  |
| Mt. Aire Blue Label             | 1112205  |
| Perdue Cutlets                  | 1112219  |
| Pilgrim's (Jumbo)               | 1120105  |
| Pilgrim's Super Clean 4/10 lbs. | 1120261  |
| Mt. Aire Whole Super Trim       | 1125687  |
| Mt. Aire 1/2 Super Trim         | 1125688  |
| House of Raeford Injected       | 1251095  |
| House of Raeford Dry            | 1190156  |

**Chunks**


| Description | Item No. |
|-------------|----------|
| George's    | 1124768  |

**Thighs**
**Bone-In**


| Description          | Item No. |
|----------------------|----------|
| House of Raeford CO2 | 1114020  |
| Perdue               | 1100623  |

**Boneless**


| Description           | Item No. |
|-----------------------|----------|
| House of Raeford      | 1114665  |
| Pilgrim's             | 1155250  |
| Eastern Shore Poultry | 1119339  |

**Wings**
**Fresh**


| Description        | Item No. |
|--------------------|----------|
| Pilgrim's Halal    | 1154083  |
| House of Raeford   | 1114942  |
| George's 4/10 lbs. | 1116025  |
| George's           | 1116073  |
| Pilgrim's Small    | 1133250  |
| Perdue Small       | 1111609  |
| Perdue Medium      | 1110606  |
| Tyson              | 1155113  |

**Frozen**

| Description                   | Item No. |
|-------------------------------|----------|
| Pilgrim's Mis-Cut Party Wings | 1253419  |
| Pilgrim's Mis-cut             | 1253419  |
| Agro 4/10# IQF                | 1211092  |
| Perdue CVP Whole Wing         | 1211609  |
| Shenandoah Roaster Portions   | 1296026  |

**Legs**


| Description      | Item No. |
|------------------|----------|
| House of Raeford | 1110624  |
| Perdue           | 1114508  |
| Pilgrim's Whole  | 1154885  |

**Party Wings**


| Description            | Item No. |
|------------------------|----------|
| Mt. Aire Medium        | 1113105  |
| House of Raeford Jumbo | 1114411  |
| Sanderson Jumbo        | 1114685  |
| George's Medium        | 1116370  |
| Tyson                  | 1115107  |

# Chicken

## Tenders



| Description                    | Item No. |
|--------------------------------|----------|
| House of Raeford Jumbo Clipped | 1214103  |

## ¼ Legs



| Description         | Item No. |
|---------------------|----------|
| Pilgrim's Small     | 1154856  |
| Pilgrim's CO2 Jumbo | 1155005  |
| George's Small      | 1115325  |
| George's Medium     | 1115316  |
| Mt. Aire CO2        | 1114105  |
| Allen               | 1158255  |
| Perdue              | 1110260  |
| Tyson               | 1125268  |

## Drum Sticks



| Description      | Item No. |
|------------------|----------|
| House of Raeford | 1112231  |
| Sanderson        | 1114520  |
| Pilgrim's        | 1122241  |
| Perdue           | 1115745  |

## Gizzards/Livers/Hearts



| Description                | Item No. |
|----------------------------|----------|
| Gizzards                   | 1110707  |
| Hearts                     | 1110905  |
| Liver 6/5 lbs.             | 1111813  |
| Pilgrim 5 lbs. Liver 8 pk. | 1124284  |

## Necks/Backs



| Description   | Item No. |
|---------------|----------|
| Skinless Neck | 1112304  |
| Backs         | 1110807  |

## WOGS



| Description               | Item No. |
|---------------------------|----------|
| Perdue 3½ lbs. 12 Head    | 1111308  |
| Perdue Chicken 14 Head    | 1111209  |
| Mt. Aire 3 lbs. Fryer     | 1122301  |
| Mt. Aire 3 lbs. Shells    | 1100302  |
| Mt. Aire 3½ lbs. Shells   | 1100352  |
| Mt. Aire 4 lbs. Shells    | 1100402  |
| George's 2¾ - 3 lbs. CVP  | 1111642  |
| George's 3 - 3¼ lbs. CVP  | 1111604  |
| George's 3¼ - 3½ lbs. CVP | 1111607  |
| George's 3½ - 4 lbs. CVP  | 1111512  |
| Pilgrim's 2½ lbs. Ice     | 1114207  |
| Pilgrim's 3 lbs. CVP      | 1114208  |
| Pilgrim's 3¾ lbs. 22 Head | 1112939  |
| Pilgrims 3½ lbs. 20 Head  | 1194297  |

## Cornish Hens



| Description               | Item No. |
|---------------------------|----------|
| Perdue                    | 1280825  |
| Golden Quail Jumbo 36 ct. | 1288899  |
| Chef Choice               | 1290525  |
| Halal Golden Quail        | 1088900  |

## Fowl



| Description           | Item No. |
|-----------------------|----------|
| Heavy Ice             | 1155555  |
| Light Ice             | 1188888  |
| Heavy Frozen Tip Top  | 1277777  |
| Stewing Hens (Frozen) | 1281558  |

## Frozen Paws



| Description              | Item No. |
|--------------------------|----------|
| Perdue Jumbo Roaster Paw | 1216129  |
| Chicken Paws             | 1281254  |
| Sanderson                | 1222072  |

**Whole**


| Description              | Item No. |
|--------------------------|----------|
| Jennie-O 10/14 lb.       | 1251014  |
| Jennie-O 12/14 lb.       | 1255515  |
| Jennie-O 14/16 lb.       | 1255520  |
| Jennie-O 16/18 lb.       | 1255525  |
| Jennie-O 18/20 lb.       | 1255530  |
| Sensenig 8/10 lb.        | 1210810  |
| Sensenig 10/12 lb.       | 1210810  |
| Northern Pride 16/20 lb. | 1251620  |
| Honey Suckle 26/28 lb.   | 1221120  |

**Thighs**


| Description    | Item No. |
|----------------|----------|
| Halal Boneless | 1250915  |
| Boneless       | 1259911  |
| Bone-In        | 1241547  |

**Tenders**


| Item No. |
|----------|
| 1242042  |

**Breasts**


| Description               | Item No. |
|---------------------------|----------|
| Holden Farms 4/7 No Timer | 1232027  |
| 8/10                      | 1230636  |
| 10/12                     | 1230626  |
| 12/14                     | 1241214  |
| 14/16                     | 1261141  |
| 16/18                     | 1261171  |
| 18/20                     | 1241820  |
| 20 Up                     | 1241820  |
| Boneless Meat             | 1240444  |

**Wings**


| Description                 | Item No. |
|-----------------------------|----------|
| Jennie-O Hen V-Wing 2-Joint | 1255342  |
| Exceldor Hen V-Wing         | 1252053  |
| Granny Hen V-Wing           | 1259361  |
| Tom V-Wing                  | 1250115  |
| Tom Whole                   | 1250351  |
| Hen Whole                   | 1250346  |
| F/S Smoked                  | 1230011  |
| Drumettes                   | 1251094  |

**Tails**


| Description        | Item No. |
|--------------------|----------|
| Tom 30 lbs.        | 1250347  |
| F/S Smoked 30 lbs. | 1230012  |
| Hen                | 1250320  |

**Drums**


| Description    | Item No. |
|----------------|----------|
| Tom            | 1252420  |
| Hen            | 1259923  |
| F/S Smoked Tom | 1234412  |

**Ground**


| Description              | Item No. |
|--------------------------|----------|
| Carolina 12/1 lb.        | 1270851  |
| Butterball 85% 2/10 lbs. | 1270852  |
| Norbest 92% 10 lbs.      | 1270888  |

**Gizzards**


| Description | Item No. |
|-------------|----------|
| 30 lbs.     | 1251103  |
| 40 lbs.     | 1250038  |

**Hearts and Liver**


| Description        | Item No. |
|--------------------|----------|
| Hearts 40 lbs.*    | 1214509  |
| Liver ABF 45 lbs.* | 1211814  |

\*Not Stocked

**Necks**


| Description        | Item No. |
|--------------------|----------|
| Tom 30 lbs.        | 1250343  |
| Hen 30 lbs.        | 1251343  |
| F/S Smoked 30 lbs. | 1230013  |

# Duck

## Grade A

| Description | Item No. |
|-------------|----------|
| Culver 4.0  | 1288719  |
| Culver 4.5  | 1288739  |
| Culver 5.0  | 1288759  |
| Culver 5.5  | 1288779  |



## Plant Grade

| Description         | Item No. |
|---------------------|----------|
| Valley Forge 3.0    | 1281739  |
| Valley Forge 3.5    | 1281759  |
| Valley Forge 4.0    | 1288742  |
| Valley Forge 4.5    | 1281728  |
| Valley Forge 5.0    | 1281762  |
| Valley Forge 5.5    | 1281764  |
| Valley Forge 6.0    | 1288706  |
| Quack on a Rack 4.0 | 1288757  |
| Quack on a Rack 4.5 | 1288756  |
| Quack on a Rack 5.0 | 1288758  |
| Quack on a Rack 5.5 | 1289758  |
| Quack on a Rack 6.0 | 1289760  |

## HOFO (Head on Feet on)

### Buddha

| Description             | Item No. |
|-------------------------|----------|
| Culver Bulk 27 lbs. USA | 1281827  |
| Culver Bulk 30 lbs. USA | 1280767  |
| Culver Bulk 33 lbs. USA | 1280833  |
| Culver Bulk 36 lbs. USA | 1281836  |
| Culver COV 24 lbs. USA  | 1281724  |
| Culver COV 27 lbs. USA  | 1281727  |
| Culver COV 28 lbs. USA  | 1281756  |
| Culver COV 36 lbs. USA  | 1281757  |
| Culver COV 30 lbs. USA  | 1281767  |



### Confucian

| Description          | Item No. |
|----------------------|----------|
| Crescent 31 lbs. USA | 1283032  |
| Crescent 33 lbs. USA | 1283334  |
| Crescent 35 lbs. USA | 1283535  |
| Crescent 36 lbs. USA | 1283636  |
| Crescent 37 lbs. USA | 1287737  |
| Crescent 41 lbs. USA | 1284242  |
| Crescent 42 lbs. USA | 1284241  |

## Lamb, Mutton & Goat

### Lamb, Mutton & Goat

- Superior suppliers such as Fletcher, McPhee, Cedar Meats, Thomas Foods, Affco, Taylor Preston, Te Kuiti, and Lean Meats
- We carry frozen lamb, mutton, and goat imported from both Australia and New Zealand



#### Available Imported Products

|                   |                     |                     |
|-------------------|---------------------|---------------------|
| Lamb Carcass      | Lamb Shank/Offal    | Mutton 6 Piece      |
| Lamb Leg Bone-In  | Goats 6 Piece       | Mutton Leg Bone-In  |
| Lamb Leg Boneless | Goats 6 Piece Burnt | Mutton Leg Boneless |
| Lamb Shoulder     | Goat Cubes          | Mutton Shanks       |
| Lamb Rack         | Goat Offal          | Mutton Shoulders    |
|                   | Whole Rabbits       |                     |

## Lamb, Goat & Rabbit

### Lamb Carcass



| Description | Item No. |
|-------------|----------|
| Australian  | 3228011  |
| New Zealand | 3228013  |
| Chile       | 3228021  |

### Lamb Shoulder



| Description         | Item No. |
|---------------------|----------|
| Australian Boneless | 3222066  |
| Australian Bone-In  | 3223020  |
| New Zealand Bone-In | 3223025  |

### Lamb Leg Bone-In



| Description | Item No. |
|-------------|----------|
| Australian  | 3229013  |

### Lamb Leg Boneless



| Description             | Item No. |
|-------------------------|----------|
| Australian Major Brands | 3222002  |
| Thomas Australian       | 3222006  |

### French Lamb Racks



| Description       | Item No. |
|-------------------|----------|
| New Zealand 12-14 | 3221214  |
| New Zealand 14-16 | 3229030  |
| New Zealand 16-18 | 3227021  |
| New Zealand 18-20 | 3227020  |

### Lamb Shank/Offal



| Description                   | Item No. |
|-------------------------------|----------|
| New Zealand Tripe             | 3222016  |
| Australian Hind Shanks        | 3223002  |
| Australian Burnt Sheep Feet   | 4254291  |
| Australian Scalded Sheep Feet | 4255011  |

### Lamb Loins



| Description | Item No. |
|-------------|----------|
| Australian  | 3227008  |

### Goats 6 Piece



| Description             | Item No. |
|-------------------------|----------|
| McPhee CS Australian    | 4255005  |
| Cedar Australian        | 4255010  |
| Australian Burnt        | 4255001  |
| McPhee Australian Burnt | 4255002  |
| SuCabrito Mexican       | 4255049  |

### Goat Cubes



| Description                | Item No. |
|----------------------------|----------|
| Cedar Blended 16x1 kg. Bag | 4255029  |
| Goat/Mutton                | 4256029  |

### Whole Rabbits



| Description       | Item No. |
|-------------------|----------|
| Chinese 44.1 lbs. | 4255003  |

### Goat Offal



| Description                 | Item No. |
|-----------------------------|----------|
| Australian Heads, 8 Per Box | 4254298  |
| Western Kidney              | 4254628  |

**Mutton**

**6 Piece**



**Description**

T&R Thomas  
McPhee M-CC 45 DN  
Midfield  
Wagstaff

**Item No.**

3222008  
3222108  
3222029  
3224036

**Leg Bone-In**



**Description**

Thomas Australian  
Prime Range New Zealand  
Te Kuiti New Zealand

**Item No.**

3222007  
3222090  
3222031

**Leg Boneless**



**Description**

Australian  
New Zealand

**Item No.**

3229026  
3229028

**Shanks**



**Description**

Prime Range New Zealand  
Fletcher Australian

**Item No.**

3225024  
3225026



**Seafood**

# Seafood

- Superior brands such as Wholey, Leardini, Newport, Fox River, Matlaw’s, Depoe Bay, Great Fish, and Schooner
- Quaker Valley is one of the largest importers and distributors of Croaker and Whiting in the U.S.



## Available Seafood Products

|                       |                            |                              |                                     |
|-----------------------|----------------------------|------------------------------|-------------------------------------|
| Cooked Shrimp         | Whiting Fillets            | Croakers (Pan Ready)         | Tilapia Fillets                     |
| Raw Shrimp            | Whiting (Headed & Gutted)  | Frog Legs                    | Tilapia Whole                       |
| Retail Shrimp         | Seafood Mix (1 lb. Retail) | Squid                        | Retail Tilapia Fillets              |
| Peeled Shrimp         | Crab Cakes                 | Octopus                      | Snapper Whole (Cleaned)             |
| Crawfish              | Sea Trout Fillets          | Flounder & Sole Fillets      | Snapper Fillet                      |
| Snow Crab Clusters    | Mackerel                   | Breaded Fish Portions        | Mussels (Black Shell & Green Shell) |
| Dungeness Clusters    | Horse Mackerel             | Pollock                      | Mussels (Plain & Garlic)            |
| Pasteurized Crab Meat | Kingfish (Whole)           | Scallops (IQF, Retail)       | Clams (Stuffed)                     |
| Imitation Crab        | Kingfish Steaks (IVP)      | Lobster Tails (Warm Water)   | Swai Fillets                        |
| Salted Fish (Bacalao) | Salmon                     | Retail Ready Seafood Fillets | Catfish Fillets                     |

## Seafood

### Cooked Retail Shrimp 1 lb. & 2 lbs. Bags



| Description                   | Item No. |
|-------------------------------|----------|
| 16/20 P&D Tail On 5/2 lb.     | 5246720  |
| 16/20 Wholey Tail On 5/2 lb.  | 5246816  |
| 21/25 Tail On 5/2 lb.         | 5246860  |
| 26/30 Tail On 5/2 lb.         | 5244370  |
| 20/40 Tail Off 5/2 lbs.       | 5246740  |
| 31/40 Tail On 5/2 lb.         | 5246832  |
| 31/40 Wholey Tail On 10/1 lb. | 5246841  |
| 41/50 Wholey Tail On 10/1 lb. | 5246151  |
| 41/50 Tail On 5/2 lb.         | 5246851  |
| 40/60 Tail Off 5/2 lb.        | 5244590  |
| 100/200 Salad 5/2 lb.         | 5247501  |

### Raw Retail Shrimp 1 lb. & 2 lbs. Bags



| Description                      | Item No. |
|----------------------------------|----------|
| 4/6 Fresh Water EZ Peel 10/2 lb. | 5247950  |
| 11/15 Arg. Red IQF Wild 10/2 lb. | 5244220  |
| 16/20 Arg. Red IQF Wild 10/2 lb. | 5244320  |
| 16/20 EZ Peel 10/2 lbs.          | 5244520  |
| 16/20 EZ Peel Wholey 10/1 lb.    | 5244720  |
| 16/20 EZ Peel Wholey 5/2 lb.     | 5244820  |
| 21/25 EZ Peel 10/2 lbs.          | 5244750  |
| 26/30 EZ Peel 10/2 lbs.          | 5244530  |
| 26/30 EZ Peel Wholey 10/1 lb.    | 5244330  |
| 31/40 Wholey EZ Peel 10/1 lb.    | 5244140  |
| 31/40 EZ Peel 10/2 lb.           | 5244825  |

### Block Food Service Shrimp (Shell On)



| Description                         | Item No. |
|-------------------------------------|----------|
| 13/15 Asian Farmed White 6/4 lb.    | 5244120  |
| 16/20 Ecuador Farmed White 6/4 lb.  | 5244620  |
| 21/25 Ecuador Farmed White 6/4 lb.  | 5244925  |
| 21/25 Ecuador Farmed White 10/4 lb. | 5244130  |
| 26/30 Ecuador Farmed White 10/4 lb. | 5244150  |
| 31/35 Ecuador Farmed White 10/4 lb. | 5243714  |
| 36/40 Ecuador Farmed White 10/4 lb. | 5243640  |
| 41/50 Ecuador Farmed White 10/4 lb. | 5245160  |

### Peeled & Deveined Raw Shrimp

1 lb. & 2 lbs. Bags



| Description                    | Item No. |
|--------------------------------|----------|
| 13/15 Tail On White 5/2 lb.    | 5244728  |
| 16/20 Tail Off Ecuador 5/2 lb. | 5244325  |
| 16/20 Wholey Tail On 5/2 lb.   | 5243932  |
| 16/20 Tail On 5/2 lb.          | 5246231  |
| 21/25 Tail On Ecuador 5/2 lb.  | 5246950  |
| 21/25 Tail Off 5/2 lb.         | 5244727  |
| 26/30 Tail On 5/2 lb.          | 5244160  |
| 26/30 Tail Off 5/2 lb.         | 5244726  |
| 41/50 Tail Off 5/2 lb.         | 5246862  |
| 51/60 Tail Off 5/2 lb.         | 5246840  |

### Salmon



| Description                       | Item No. |
|-----------------------------------|----------|
| 6 oz. Atlantic Portions 1/10 lb.  | 5014309  |
| 8 oz. Atlantic Portions 1/10 lb.  | 5001208  |
| Great Fish Salmon Fillet 10/1 lb. | 5014519  |
| Retail Salmon Fillet 10/20 oz.    | 5002377  |



### Head-On Shrimp

| Description                    | Item No. |
|--------------------------------|----------|
| 30/40 Champmar Ecuador 6/4 lb. | 5244931  |
| 40/50 Champmar Ecuador 6/4 lb. | 5244941  |

## Seafood

### Snow Crab & Dungeness

| Description                           | Item No.   |
|---------------------------------------|------------|
| Snow Crab Clusters 5/8 oz. 1/10 lb.   | 5004410    |
| Snow Crab Clusters 5/8 oz. 1/30 lb.   | 5004458    |
| Snow Crab Clusters 8/10 oz. 1/30 lb.  | 5003580    |
| Snow Crab Clusters 12/up oz. 1/10 lb. | 5003107    |
| Dungeness Clusters Wild Caught        | 5004485-95 |



### Argentina Whiting Fillet

| Description                      | Item No. |
|----------------------------------|----------|
| 4/6 oz. Skin on Fillet 4/10 lb.  | 5029346  |
| 6/8 oz. Skin on Fillet 4/10 lb.  | 5029368  |
| 4/6 oz. Skinless Fillet 4/10 lb. | 5029246  |
| 6/8 oz. Skinless Fillet 4/10 lb. | 5029268  |



### Squid

| Description               | Item No. |
|---------------------------|----------|
| Wholey Rings IQF 10/1 lb. | 5001269  |

### Retail Whiting Fillets



| Description                   | Item No. |
|-------------------------------|----------|
| Great Fish Retail 15/2 lb.    | 5029115  |
| Great Fish Retail 6/5 lb.     | 5029038  |
| Wholey Chile Retail 15/2 lbs. | 5029715  |
| Wholey Wild Caught Retail 6/5 | 5029865  |



### Octopus (Pulpo)

| Description                | Item No. |
|----------------------------|----------|
| Octo Style Sliced 10/1 lb. | 5017171  |
| 4/6 Philippine 1/30 lb.    | 5017146  |

### Whiting Headed & Guttled



| Description                 | Item No. |
|-----------------------------|----------|
| Newport 10/5 lb. Retail Box | 5029103  |

### Seafood Mix

| Description                       | Item No. |
|-----------------------------------|----------|
| Peruvian Mix (no surimi) 10/1 lb. | 5017191  |
| Wholey Seafood Mix 10/1 lb.       | 5001469  |



### Croakers

| Description                     | Item No. |
|---------------------------------|----------|
| 5/8 Pan Ready Brazilian         | 5006016  |
| 8/16 Pan Ready 10 lb. Box       | 5008016  |
| 8/16 Brazilian Leardini 25 lb.  | 5007225  |
| 16/24 Pan Ready 10 lb. Box      | 5001624  |
| 16/32 Leardini Pan Ready 25 lb. | 5005232  |
| 24/32 Pan Ready 25 lb.          | 5002132  |
| 32/Up Pan Ready 25 lb.          | 5002123  |

### Whiting 10 lb. Box

| Description | Item No. |
|-------------|----------|
| Plain Label | 5029399  |
| Wholey      | 5029382  |

### Sea Trout Fillets

| Description                | Item No. |
|----------------------------|----------|
| 4/6 Argentine Wild Skin On | 5023146  |
| 6/8 Argentine Wild Skin On | 5023168  |



## Seafood

### Mackerel



| Description                | Item No. |
|----------------------------|----------|
| Whole 500/700 gm Pacific   | 5014957  |
| Norway 400/600 Wild Caught | 5014246  |
| Norway 400/600 gm          | 5014351  |
| Horse Mackerel 12/28 oz.   | 5014656  |
| Horse Mackerel 300/500     | 5014656  |
| Horse Mackerel 500/Up      | 5014856  |

### Kingfish



| Description                       | Item No. |
|-----------------------------------|----------|
| 6/8 IVP Kingfish Steak 1/10 lb.   | 5014322  |
| 8/10 oz. Kingfish Steaks 1/10 lb. | 5014425  |
| 5/+ Whole Kingfish 1/55 lbs.      | 5012101  |
| 10/12 oz. Kingfish Steak 1/10 lb. | 5014426  |



### Frog Legs

| Description            | Item No. |
|------------------------|----------|
| 4/6 China 80% 6/5 lbs. | 5500046  |

### Flounder Fillets



| Description                       | Item No. |
|-----------------------------------|----------|
| Wholey China Wild                 | 5007125  |
| Great Fish 15/2 lbs.              | 5007115  |
| 5 oz. IQF Flounder/ Sole 1/10 lb. | 5007127  |



### Breaded Shrimp

| Description               | Item No. |
|---------------------------|----------|
| 16/20 Butterfly 4/3 lb.   | 5001230  |
| Great Fish Jumbo 20/8 oz. | 5001232  |

### Crab Cakes



| Description              | Item No. |
|--------------------------|----------|
| Wholey Retail 5 pack     | 5002102  |
| Foodservice Pack 2/5 lb. | 5001301  |

### Breaded Fish



| Description             | Item No. |
|-------------------------|----------|
| Schooner Fish Cake USA  | 5001202  |
| Schooner Fish Stick USA | 5001203  |
| Schooner Flounder USA   | 5001204  |

### Breaded Clams & Scallops



| Description                            | Item No. |
|--|----------|
| Stuffed Clams 12/20 oz. 9-Pack         | 5001211  |
| Matlaw's Stuffed Scallops 12/8 oz. 9pk | 5002018  |

**Seafood**

**Pasteurized  
(Refrigerated)  
Crabmeat**  
12/1 lb.



| Description                | Item No. |
|----------------------------|----------|
| Colossal Lump              | 5001191  |
| Jumbo (HAANI)              | 5001193  |
| Lump (HAANI)               | 5001195  |
| Super Lump                 | 5001194  |
| Claw Meat (Pelagicus)      | 5001198  |
| Jumbo Crab Frozen 24/1 lb. | 5022230  |
| Lump Crab Frozen 24/1 lb.  | 5022230  |

**Cleaned Crab**



| Description                          | Item No. |
|--------------------------------------|----------|
| Jaiba 5/7 Cleaned Crab 20/1 lb. Tray | 5004108  |

**Imitation Crab**



| Description                        | Item No. |
|------------------------------------|----------|
| Imitation Crab Sea Sticks 30/1 lb. | 5011211  |
| Flakes & Chunks 12/2½ lbs.         | 5011212  |
| Flakes & Chunks 30/1 lb.           | 5011113  |

**Tilapia Whole**



| Description                       | Item No. |
|-----------------------------------|----------|
| 350/550 70% 1/40 lb.              | 5790355  |
| 550/750 Whole Tilapia 40#         | 5775575  |
| 550/750 Retail 4/5 lbs.           | 5799450  |
| 750/Up Whole Tilapia 40#          | 5770750  |
| 950/Up 70% 1/40 lb.               | 5790950  |
| Great Fish Whole Tilapia 8/3 lbs. | 5029461  |

**Pollock**



| Description                      | Item No. |
|----------------------------------|----------|
| 4/6 oz. Pollock Fillet 4/10 lbs. | 5707046  |

**Tilapia Fillets**



| Description                     | Item No. |
|---------------------------------|----------|
| 3/5 oz. IQF 70% 10 lb.          | 5709935  |
| 3/5 oz. IVP 70% 10 lb.          | 5707057  |
| 5/7 oz. IVP 70% 10 lb.          | 5707057  |
| 5/7 oz. IQF Farmed 70% 10 lb.   | 5708057  |
| 7/9 oz. IVP Farmed 70% 10 lb.   | 5709979  |
| 7/9 oz. IVP Farmed 100% 10 lb.  | 5029483  |
| Great Fish 10/1 lb. Retail Bags | 5029301  |
| Great Fish 10/3 lb. Retail Bags | 5029310  |

**Scallops**



| Description                     | Item No. |
|---------------------------------|----------|
| 60/80 ct. Bay Scallops 12/1 lb. | 5200305  |

## Warm Water Lobster Tails

10 lb.



| Description | Item No. |
|-------------|----------|
| 4 oz.       | 5500104  |
| 5 oz.       | 5500105  |
| 6 oz.       | 5500106  |
| 7 oz.       | 5500107  |
| 8 oz.       | 5500108  |
| 9 oz.       | 5500109  |
| 10-12 oz.   | 5500110  |
| 12-14 oz.   | 5500112  |
| 14-16 oz.   | 5500114  |
| 16-20 oz.   | 5500116  |
| 20 oz./Up   | 5500124  |

## Whole Cleaned Snapper



| Description                    | Item No. |
|--------------------------------|----------|
| ½ to ¾ Snapper 1/10 lb.        | 5014114  |
| ¾ to 1 Snapper 1/10 lb.        | 5014226  |
| 1 to 1½ Snapper 1/10 lb.       | 5014129  |
| 1 to 2 Snapper 1/10 lb.        | 5014775  |
| 1½ to 2 Snapper 1/10 lb.       | 5014611  |
| 2 to 3 Snapper 1/10 lb.        | 5014724  |
| 2 to 3 Snapper 1/22lb.         | 5014223  |
| 3 to 4 Snapper 1/22 lb.        | 5014103  |
| 4/Up 1/22 lb.                  | 5015341  |
| Retail Bagged Snapper 5/2 lb.  | 5014225  |
| Retail Bagged Snapper 10/2 lb. | 5015113  |

## Mussels



| Description                            | Item No. |
|--|----------|
| Wholey 2 lbs. Farmed Chile             | 5016124  |
| Wholey 2 lb. Garlic Mussels            | 5016127  |
| Wholey Plain 10/1 lb.                  | 5016125  |
| Chile Plain IVP 10/1 lb. Retail        | 5016327  |
| Great Fish Garlic Butter 10/1 lb. Bags | 5016326  |
| Whole Cooked New Zealand Green Shell   | 5216324  |

## Catfish Fillets



| Description                              | Item No. |
|--|----------|
| Channel Catfish Fillet 5/7 oz. 1/15 lbs. | 5001737  |
| Channel Catfish Fillet 7/9 oz. 1/15 lbs. | 5001702  |

## Swai Fillets



| Description                  | Item No. |
|------------------------------|----------|
| 5/7 Swai Fillet IQF 15 lbs.  | 5001603  |
| 7/9 Swai Fillet IQF 15 lbs.  | 5001602  |
| Retail Swai Fillet 10/2 lbs. | 5001611  |

## Salted Fish (Bacalao)



| Description             | Item No. |
|-------------------------|----------|
| Fox River 1 lb.         | 5101400  |
| Buena Ventura 1 lb.     | 5101500  |
| Gaspe Cod Fillet        | 5101200  |
| Smoked Herring 1/10 lb. | 5101102  |

## Golden Pompano



| Description               | Item No. |
|---------------------------|----------|
| 600/800 gram 40 lbs. bulk | 5786080  |

# Seafood

## Specialty Seafood



**Description**

Dressed Smelts Peru Wild Caught 10/1 lb.  
 Raw Conch Meat 95% Cleaned 10/5 lb. Retail  
 8 oz. IVP Chilean Sea Bass Portions 1/10 lb.

**Item No.**

5014201  
 5029100  
 5200204

## Tuna



**Description**

6 oz. Tuna Steak 1/10 lb.  
 5-8 lbs. Center Cut Tuna Loins 1/30 lb.

**Item No.**

5014320  
 5029391



## Crawfish

**Description**

Great Fish Crawfish 8/3 lbs.  
 U/10 ct. Cooked and Seasoned 2/5 lb.

**Item No.**

5491018  
 5491015

## Retail Packaged Fish Fillet



**Description**

Great Fish China Cod Fillet 10/1 lb.  
 Wholey Tuna Steak 12/13 oz.  
 2-3 oz. Tuna Portions 10/1 lb.  
 Mahi Mahi Portions 10/1 lb.

**Item No.**

5300304  
 5300309  
 5300315  
 5300415

## Deli

### Deli

- Quaker Offers a complete line of brands in categories such as cheeses, meats, condiments, burgers, breaded chicken, french fries, oils and dressings and many more
- Key suppliers that Quaker partners with include Hormel, Tyson, Land O'Lakes, Butterball, and Schreiber and more



### Available Deli Products

Packaged Meats

Halal Items

Cheese

Ham

Deli Meats

Salads & Condiments

Eggs & Oils

Food Service



**American Cheese**



| Description                             | Item No. |
|---|----------|
| Main Street White Loaf 6/5 lbs.         | 4104125  |
| Clearfield White 6/5 lbs.               | 4104005  |
| Land O'Lakes White Loaf 6/5 lbs.        | 4104020  |
| Land O'Lakes Yellow Loaf 6/5 lbs.       | 4104065  |
| Naturally Slender White 2/5 lbs.        | 4104040  |
| Bongard Super Melt White Loaf 6/5 lbs.  | 4104130  |
| Bongard Super Melt Yellow Loaf 6/5 lbs. | 4102631  |

**Sliced American Cheese**



| Description                           | Item No. |
|---------------------------------------|----------|
| Main Street 120 Count White           | 4104206  |
| Main Street 160 Count White           | 4104180  |
| Main Street 160 Count Yellow          | 4104215  |
| Unique Sand 160 Pull 4/5 lbs. Yellow  | 4100004  |
| Unique Sand 160 Pull 4/5 lbs. White   | 4100005  |
| Plain Label 160 Count 4/5 lbs. Yellow | 4100315  |
| Plain Label 160 Count 4/5 lbs. White  | 4100312  |
| Great Lakes White 12/16 oz.           | 4104476  |
| Great Lakes Yellow 12/16 oz.          | 4104477  |

**Mozzarella**



| Description                             | Item No. |
|---|----------|
| Lennor Whole Milk Loaf                  | 4104365  |
| Jacobo Part Skim Milk Loaf              | 4104357  |
| Rialto Shredded Whole Milk 6/5 lbs.     | 4104370  |
| Jacobo Shredded Part Skim Milk 6/5 lbs. | 4104375  |
| Sartori Whole Milk Loaf                 | 4104341  |
| Sartori Part Skim Milk Loaf             | 4104337  |
| Lugano Whole Milk Loaf 8/6 lbs.         | 4110348  |

**Swiss Cheese**



| Description                     | Item No. |
|---------------------------------|----------|
| Great Lakes Full Cut            | 4104251  |
| Great Lakes Sandwich Cut        | 4104255  |
| Valio Full Cut                  | 4104265  |
| Valio Sandwich Cut              | 4104270  |
| Jarlsberg Square                | 4104645  |
| Lorraine Original Block 10 lbs. | 4104290  |
| Jarlsberg Lite 10 lbs.          | 4104650  |
| Alpine Lace                     | 4104246  |
| Corner Stone                    | 4106533  |

**Provolone**



| Description              | Item No. |
|--------------------------|----------|
| Lennor 3/12 lbs.         | 4104322  |
| Rialto 1/2, 6/6 lbs.     | 4104629  |
| Stella 3/12 lbs.         | 4104335  |
| Stella 1/2, 6/6 lbs.     | 4104338  |
| Sartori Aged 2/25 lbs.   | 4104330  |
| Belgioioso 2/12 lbs.     | 4104305  |
| Belgioioso Sharp         | 4102742  |
| Belgioioso Pear Sharp    | 4104310  |
| Belgioioso Half Moon     | 4104318  |
| Galbani Smoked Provolone | 4101240  |

**Cheddar Cheese**



| Description                      | Item No. |
|----------------------------------|----------|
| Great Lakes Mild White 10 lbs.   | 4104900  |
| Great Lakes Mild Yellow 10 lbs.  | 4104905  |
| Main Street Shredded 6/5 lbs.    | 4104506  |
| Great Lakes Sharp White 10 lbs.  | 4104490  |
| Great Lakes Sharp Yellow 10 lbs. | 4104910  |
| Cooper CV White Sharp 6/5 lbs.   | 4104445  |
| Cooper CV Yellow Sharp 6/5 lbs.  | 4104450  |

## Deli—Hams & Cheese

### Specialty Cheese



| Description                                     | Item No. |
|---|----------|
| Pauly Cream Cheese                              | 4104502  |
| Jacobo Shredded Monterey Jack 6/5 lbs.          | 4104525  |
| Great Lakes Pepper Jack 10 lbs.                 | 4104925  |
| New Yorker/Land O'Lakes Pepper Cheddar 2/5 lbs. | 4104435  |
| Rialto Grated Romano 4/5 lbs.                   | 4104666  |
| Rialto Grated Parmesan 4/5 lbs.                 | 4104777  |
| Hormel Pepperoni & Cheese 2/5 lbs.              | 4104705  |
| Munchee 2/5 lbs.                                | 4104540  |
| Land O'Lakes Italian Blend 2/5 lbs.             | 4108300  |
| Raskas 30 Bulk Cream Cheese                     | 4111111  |
| Caddy Creek Yellow Mini Longhorn 2/6 lbs.       | 4104449  |
| Great Lake Muenster 6/6 lbs.                    | 4104581  |

### Cooked Ham



| Description                   | Item No. |
|-------------------------------|----------|
| Chefs Choice 10% Ham          | 4106204  |
| Hormel 10%                    | 4107180  |
| Smithfield 10%                | 4102887  |
| Hormel 35%                    | 4107195  |
| Hormel Premium Low Sodium Ham | 4107189  |

### Imported Ham



| Description                 | Item No. |
|-----------------------------|----------|
| Krakus                      | 4107425  |
| Deliham Water Added         | 4107585  |
| Valhalla Gold 2/12 lbs.     | 4107765  |
| Valhalla Gold Natural Juice | 4107767  |

### Specialty Ham



| Description               | Item No. |
|---------------------------|----------|
| Armour Virginia           | 4116321  |
| Smithfield Virginia       | 4107690  |
| Hatfield Virginia         | 4107645  |
| Hatfield Honey Ham        | 4107125  |
| Armour Honey              | 4115057  |
| Hatfield Pepper           | 4107519  |
| Berks Cooked Round Pepper | 4107045  |
| Eckrich Pepper            | 4115060  |
| Prima Porta Hot Ham       | 4107158  |
| Berks Tavern              | 4107053  |
| Hatfield Tavern           | 4107495  |
| Hormel S/M Chopped        | 4107210  |
| Hormel Oval Spiced Ham    | 4139080  |
| Butcher Wagon Canadian    | 4102263  |

### Retail Ham



| Description                  | Item No. |
|------------------------------|----------|
| Smithfield 1/2 Spiral        | 2303119  |
| Hatfield Whole Country Style | 2315005  |
| Hatfield 1/4 Country Style   | 2316015  |

### Bologna



| Description           | Item No. |
|-----------------------|----------|
| Butcher Wagon         | 4135145  |
| Hatfield              | 4135144  |
| Hatfield Beef         | 4135205  |
| Hatfield German       | 4135235  |
| Seltzer Lebanon       | 4135192  |
| Seltzer Sweet Lebanon | 4135193  |

### Corned Beef



| Description                 | Item No. |
|-----------------------------|----------|
| Saval Whole Cooked Brisket  | 4109260  |
| Elite Cooked Beef 1/2       | 4101145  |
| Main Street Pickled Brisket | 4109512  |

### Pastrami



| Description               | Item No. |
|---------------------------|----------|
| Elite 1/2 Flats           | 4107510  |
| Berkshire Farms 1/2       | 4101440  |
| Saval 1 <sup>st</sup> Cut | 4146925  |

### Salami



| Description          | Item No. |
|----------------------|----------|
| Butcher Wagon Cooked | 4107566  |
| Hatfield Hoagie      | 4135005  |
| Hatfield Beef        | 4135065  |

### Liverwurst

| Description                  | Item No. |
|------------------------------|----------|
| Hatfield Liverwurst 3/6 lb.  | 4135250  |
| Hatfield Liverwurst 12/1 lb. | 4137168  |



### Coteghino

| Description        | Item No. |
|--------------------|----------|
| Hatfield Coteghino | 4135125  |

### Roast Beef



| Description             | Item No. |
|-------------------------|----------|
| Elite 1/2               | 4101142  |
| Mrs. Ressler's Flat 1/2 | 4101411  |
| Saval Whole Capoff      | 410054   |

### Breading

| Description           | Item No. |
|-----------------------|----------|
| Colonel Jim's Chicken | 4182009  |

# Deli

## Sausage, Rolled



| Description                    | Item No. |
|--------------------------------|----------|
| Godshall's Mild Turkey Sausage | 4111340  |
| Godshall's Hot Turkey Sausage  | 4111360  |
| Hatfield Polish Kielbasa       | 4133025  |
| CVF Beef Mild                  | 4133325  |
| CVF Beef Hot                   | 4133330  |
| Arnold Smoked Hot Beef         | 4801009  |
| Arnold Smoked Mild Beef        | 4801010  |
| Arnold 40 oz. Turkey Sausage   | 4802316  |

## Burgers



| Description                            | Item No. |
|--|----------|
| <b>Food Service</b>                    |          |
| Q Beef 4 oz. 10 lbs.                   | 4297940  |
| Q Beef 5 oz. 10 lbs.                   | 4297945  |
| Q Beef 8 oz. 10 lbs.                   | 4297980  |
| <b>Retail</b>                          |          |
| Philly Gourmet Patty 4 oz. 12/2 lbs.   | 4291155  |
| Philly Homestyle Patty 4 oz. 12/2 lbs. | 4293001  |
| Philly Gourmet Patty 4 oz. 6/4 lbs.    | 4294155  |
| Philly Homestyle Patty 4 oz. 6/4 lbs.  | 4293101  |

## Jamaican Beef & Chicken Patties



| Description                                 | Item No. |
|---|----------|
| Tower Jamaican Beef Patty Mild Bulk         | 4250051  |
| Tower Jamaican Beef Patty Hot Bulk          | 4250052  |
| Tower Jamaican Beef Patty Mild 9-pk. Retail | 4254001  |
| Tower Jamaican Beef Patty Hot 9-pk. Retail  | 4254002  |
| Tower Jamaican Beef Patty Mild 3-pk. Retail | 4299000  |
| Tower Jamaican Beef Patty Hot 3-pk. Retail  | 4299001  |
| Tower Jamaican Chicken Patty 9-pk. Retail   | 4254003  |
| Tower Jamaican Chicken Patty 3-pk. Retail   | 4299002  |

## Salami Genoa

| Description      | Item No. |
|------------------|----------|
| Lido             | 4135115  |
| Hormel Magnifico | 4135085  |
| Hormel Dilusso   | 4135080  |
| Citterio Ciao    | 4135615  |



## Pepperoni



| Description                    | Item No. |
|--------------------------------|----------|
| Hormel Bold Sliced 2/5 lbs.    | 4144111  |
| Hormel Long Slicer 12/2 lb.    | 4138060  |
| Hormel Sandwich (Leoni)        | 4138080  |
| Hormel Rosa Grande 10 lbs.     | 4138100  |
| Margherita Fine Sticks 10 lbs. | 4138150  |
| Margherita Sliced 2/5 lbs.     | 4132014  |

## Prosciutto



| Description | Item No. |
|-------------|----------|
| Margherita  | 4138159  |
| Carando     | 4107077  |

## Hard Salami

| Description           | Item No. |
|-----------------------|----------|
| Sterling Hard         | 4135040  |
| Hormel Magnifico Hard | 4135045  |





**Sopressata**

| Description  | Item No. |
|--------------|----------|
| Hormel Sweet | 4131440  |

**Beef Bacon**



| Description                | Item No. |
|----------------------------|----------|
| Godshall's Slab            | 4111080  |
| Best Smoked Slab 3/10 lbs. | 4195931  |

**Franks**



| Description                       | Item No. |
|-----------------------------------|----------|
| Bar S Jumbo Meat 24/1 lb.         | 4113000  |
| Bar S Tasty Chicken 24/1 lb.      | 4113050  |
| Bar S Turkey 12/1 lb.             | 4113053  |
| Bar S Jumbo Beef 12/1 lb.         | 4113001  |
| Bar S Meat Family Pack 8/3 lb.    | 4114063  |
| Bar S Chicken Family Pack 8/3 lb. | 4116454  |
| Bar S Turkey Family Pack 8/3 lb.  | 4119556  |



|                                    |         |
|------------------------------------|---------|
| Hatfield Bulk Beef Franks 2/5 lbs. | 4113075 |
| Hatfield Beef 6/3 lbs.             | 4113200 |

**Turkey Bacon**



| Description            | Item No. |
|------------------------|----------|
| Godshall's Sliced Slab | 4110830  |
| Godshall's Slab        | 4110995  |

**Retail Bacon**



| Description                              | Item No. |
|--|----------|
| <b>Pork</b>                              |          |
| Jamestown 1 lb.                          | 4104895  |
| Smithfield 1 lb.                         | 4110858  |
| Butcher Wagon 1 lb.                      | 4110300  |
| Indiana 1 lb.                            | 4180117  |
| <b>Turkey</b>                            |          |
| Godshall's Retail Turkey Bacon 12/12 oz. | 4110990  |
| Godshall's Retail Maple Turkey 12/12 oz. | 4102006  |
| <b>Beef</b>                              |          |
| Godshall's Retail Beef 12/12 oz.         | 4110991  |

**Pork Roll**



| Description                 | Item No. |
|-----------------------------|----------|
| Hatfield Bulk               | 4135315  |
| Taylor Thick Slice 12/6 oz. | 4135340  |
| Taylor Thin Slice 12/6 oz.  | 4135345  |
| Taylor 12/1 lb.             | 4135370  |
| Taylor 4/3 lb.              | 4130105  |
| Taylor 2/6 lb.              | 4135355  |
| Trenton 2/6 lb.             | 4135360  |
| Hatfield 10/1 lb.           | 4133239  |

**Scrappe**



| Description            | Item No. |
|------------------------|----------|
| Hatfield Pork 1 lb.    | 4133050  |
| Hatfield Pork 5 lbs.   | 4133100  |
| Godshall's Turkey 1lb. | 4133110  |
| Leidy's Pork 1 lb.     | 4139288  |

**Pizza Toppings**

| Description                     | Item No. |
|---------------------------------|----------|
| Hormel Fast & Easy Cooked Bacon | 4110859  |
| Hormel Pre-Cut Pepperoni Pizza  | 4138115  |

**Deli**

**Dried Beef**

| Description           | Item No. |
|-----------------------|----------|
| Knauss Smoked Knuckle | 4139130  |
| Knauss Chipped        | 4139135  |
| Carson 4 oz. Package  | 4139140  |

**Bulk Bacon**


| Description                          | Item No. |
|--------------------------------------|----------|
| Hatfield 16/18 Hotel                 | 4110350  |
| Hatfield 20/22 Hotel                 | 4110400  |
| Hatfield Sliced Slab 1/15 lbs.       | 4110500  |
| Hatfield Sliced Slab 2/15 lbs.       | 4110600  |
| Hatfield Thick Sliced Slab 1/15 lbs. | 4110700  |
| Hatfield 18/22 Chef Pleaser          | 4110550  |
| Hatfield Applewood Sliced Slab       | 4110375  |
| Kunzler Sliced Slab                  | 4110650  |
| Indiana 14/18 Hotel                  | 4180707  |
| Indiana 18/22 Hotel                  | 4180708  |
| Indiana 18/22 Layout                 | 4180709  |
| JFM 14/18 Applewood Hotel Bacon      | 4130418  |
| JFM 18/22 Hickory Layout Bacon       | 4130459  |
| JFM 14/18 Applewood Layout Bacon     | 4130532  |
| Hatfield Fresh Rindless Bacon        | 4112971  |
| Hatfield Slab Bacon                  | 4112970  |

**Turkey Breast White**


| Description           | Item No. |
|-----------------------|----------|
| Carolina Deli Delight | 4181476  |
| Carolina Deli         | 4116000  |
| Carolina Deluxe       | 4116009  |

**Turkey Honey**


| Description                                 | Item No. |
|---|----------|
| Butterball Just Perfect Smoked Honey Breast | 4116060  |
| Jennie-O Mesquite Smoked Honey Breast       | 4118602  |

**Turkey Breast Smoked**


| Description             | Item No. |
|-------------------------|----------|
| Butterball Just Perfect | 4116030  |
| Carolina                | 4118209  |
| Carolina Deli           | 4102478  |
| Carolina Deluxe         | 4116138  |

**Specialty Turkey**


| Description                          | Item No. |
|--------------------------------------|----------|
| Carolina Pastrami                    | 4116566  |
| Ressler's Pepper                     | 4103346  |
| Ressler's Cajun                      | 4103755  |
| Jennie-O Turkey Ham                  | 4118028  |
| Butterball Hickory Smoked Turkey Ham | 4119029  |

**Turkey Breast Brown**


| Description                     | Item No. |
|---------------------------------|----------|
| Carolina Deluxe                 | 4116150  |
| Main Street Pan Roasted         | 4112474  |
| Butterball Just Perfect         | 4111023  |
| Norbest Signature Classics      | 4116003  |
| Ressler's Braised Turkey Breast | 4101428  |
| Holiday Pan Roasted Braised     | 4116289  |

**Cracklins**


| Description             | Item No. |
|-------------------------|----------|
| American Bulk Cracklins | 2325035  |

**Chicken**



| Description                  | Item No. |
|------------------------------|----------|
| Mrs. Ressler's Buffalo Style | 4160185  |

**Eggs**



| Description                | Item No. |
|----------------------------|----------|
| Extra Large Cart 15 Dozen  | 4119020  |
| Extra Large Loose 15 Dozen | 4119090  |
| Large Cart 15 Dozen        | 4119250  |

**Bakery**



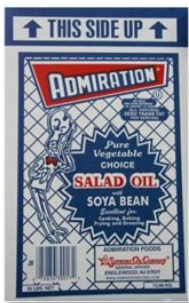
| Description  | Item No. |
|--------------|----------|
| Salt 50 lbs. | 4182005  |

**Mayo**



| Description             | Item No. |
|-------------------------|----------|
| Admiration 4/1 Gallon   | 4119189  |
| Admiration Tub 5 Gallon | 4119187  |
| Admiration Red Label    | 4119185  |
| Hellmann's 4/1 Gallon   | 4119191  |

**Oil**



| Description       | Item No. |
|-------------------|----------|
| Premier Salad     | 4119265  |
| Admiration Soya   | 4119266  |
| Admiration Canola | 4119273  |
| Magic Fry Clear   | 4119270  |
| Magic Chef Creamy | 4119275  |
| Divo 10% Blended  | 4119280  |
| Sesame            | 4183636  |

**Butter**



| Description             | Item No. |
|-------------------------|----------|
| Salted Solid            | 4119210  |
| 1/4 Salt Butter         | 4119213  |
| Admiration Blend        | 4119231  |
| Admiration Solid OLEO   | 4119149  |
| Dew Fresh OLEO Quarters | 4119135  |

**Ready to Cook Turkey Breast**



| Description   | Item No. |
|---|----------|
| Pitman Farms Sweetheart Foil                                | 4215415  |
| Pittman Farms Sweetheart, 10/12 lbs. Plastic                | 4216450  |
| Agro Skin-On Cook-n-Bag 2/11 lb. Net                        | 4210452  |
| Agro Skin-On Cook-n-Bag Net 2/9 lb.                         | 4210461  |
| Turkey Valley Farm Roasted Cook-n-Bag Turkey Breast 3/9 lb. | 4211143  |
| Turkey Valley Farm Foil Skin-On 8-12 2/10 lb.               | 4211146  |
| Turkey Valley Farm Netted 10-12 2/11 lb.                    | 4211154  |

**Deli**
**Dressings, Sauces, Mustard**


| Description                     | Item No. |
|---------------------------------|----------|
| Ken's Blue Cheese Cups          | 4184020  |
| Ken's Honey Mustard 1½ oz. Cups | 4184025  |
| Ken's Ranch 100/1.5 oz. Cups    | 4125155  |
| Admiration Salad Style Mustard  | 4119315  |
| Gator Horse Radish              | 4119800  |
| Nugget Cocktail Sauce           | 4119820  |
| Admiration White Vinegar        | 4119286  |
| Supreme White Vinegar           | 4119296  |
| Cabot Sour Cream 6/5 lbs.       | 4119130  |
| Sweet Baby Ray's BBQ Sauce      | 4118190  |
| Lion Grill Blazin' BBQ Sauce    | 4119190  |
| Frank's Red Hot Sauce 4/1 Gal.  | 4184008  |

**Cooking Wine**

| Description       | Item No. |
|-------------------|----------|
| Sherry 4/1 Gallon | 4119100  |

**Lard**


| Description          | Item No. |
|----------------------|----------|
| Leidy Lard 14 oz.    | 4119302  |
| Hatfield Can 47 lbs. | 4139095  |

**Pickles**


| Description                       | Item No. |
|-----------------------------------|----------|
| Main Street 30 Count              | 4111725  |
| K-Z Large 30 Count                | 4119195  |
| Main Street Chips 5 Gallon        | 4110025  |
| Main Street Spears 5 Gallon       | 4110120  |
| SAN/BG Hamburger Chips 4/1 Gallon | 4119214  |
| Relish 4/1 Gallon                 | 4119325  |

**Sauerkraut**


| Description | Item No. |
|-------------|----------|
| Kissling    | 4139100  |



**Peppers**



| Description                    | Item No. |
|--------------------------------|----------|
| San Sliced Banana 4/1 Gallon   | 4119220  |
| Whole Hot Cherry 4/1 Gallon    | 4119240  |
| BG/SD Sliced Cherry 4/1 Gallon | 4119235  |
| San Sweet 4/1 Gallon           | 4119225  |
| BG/SD Chopped Cherry 1 Gallon  | 4119230  |

**Protein Salads**



| Description                    | Item No. |
|--------------------------------|----------|
| Main Street Seafood            | 4119417  |
| Main Street Tuna               | 4119418  |
| Main Street Egg                | 4119419  |
| Main Street Shrimp             | 4119429  |
| Packer Bruschetta              | 4119432  |
| Main Street Roasted Red Pepper | 4119434  |
| Main Street White Chicken      | 4119439  |

**Canned Tuna**



| Description             | Item No. |
|-------------------------|----------|
| Premium Solid White     | 4125152  |
| Premium Skip Jack Light | 4125452  |
| Tongol Tuna             | 4125602  |

**Bottle Sauce**



| Description                   | Item No. |
|-------------------------------|----------|
| Lion Grillblazin' BBQ         | 4119190  |
| Franks Red Hot Sauce 4 Gallon | 4184008  |

**Wet Salads**



| Description      | Item No. |
|------------------|----------|
| Endico Cole Slaw | 4119364  |
| Endico Macaroni  | 4119381  |
| Endico Potato    | 4119560  |

**Canned**



| Description                        | Item No. |
|------------------------------------|----------|
| Main Street Cheese Sauce 6/10 lbs. | 4119245  |
| Muy Fresco Cheddar Cheese Sauce    | 4119256  |
| Heinz Ketchup 6/10 lbs.            | 4114190  |
| Hunts Ketchup 6/10 lbs.            | 4119095  |
| Stems & PCS Mushrooms              | 4119255  |

**Dessert**



| Description                      | Item No. |
|----------------------------------|----------|
| Kozy Shack Rice Pudding 2/4 lbs. | 4119170  |

# Deli

## Sandwich Steaks



|             | Description            | Item No. |
|-------------|------------------------|----------|
| <b>Bulk</b> | Main Street Beef 4 oz. | 4294444  |
|             | Main Street Beef 6 oz. | 4294436  |
|             | Q Chicken 4 oz.        | 4281104  |

|               | Description                       | Item No. |
|---------------|-----------------------------------|----------|
| <b>Retail</b> | Philly Gourmet All Beef 12/21 oz. | 4290001  |
|               | Philly's Best Beef 4 oz.          | 4295435  |
|               | Philly's Best Beef 5 oz.          | 4293435  |
|               | Silver Spring Beef                | 4211614  |
|               | Silver Spring Chicken             | 4281453  |

## Meatballs



| Description                            | Item No. |
|--|----------|
| Main Street Chicken & Beef 1 oz.       | 4299215  |
| Rialto All Beef 1/2 oz.                | 4299216  |
| Rialto All Beef 1 oz.                  | 4299217  |
| Rialto All Beef 2 oz.                  | 4299219  |
| Buon Gusto Turkey 1 oz.                | 4299220  |
| Silverlake Halal Beef & Chicken 5 lbs. | 4291010  |

## Fries

### Regular Cut Fries

| Description           | Item No. |
|-----------------------|----------|
| Club 3/8, 1/30 lb.    | 4201222  |
| Western 3/8, 1/30 lb. | 4201121  |

### Crinkle Cut Fries

| Description   | Item No. |
|---------------|----------|
| Snospud       | 4201080  |
| Club          | 4201213  |
| Western Hills | 4201132  |



### Steak Fries

| Description | Item No. |
|-------------|----------|
| Club        | 4201169  |
| Snospud     | 4201120  |

### Specialty Fries

| Description                   | Item No. |
|-------------------------------|----------|
| St. Arneault Shoestring       | 4200002  |
| McCain Redstone Curly         | 4207082  |
| Cavendish Straight 3/8 Coated | 4205301  |
| McCain Sweet Potato           | 4204760  |

**Casings**



| Description        | Item No. |
|--------------------|----------|
| Hanks Hog 32/35 mm | 4139210  |

**Food Service Grilled**



| Description                 | Item No. |
|-----------------------------|----------|
| Tyson Chicken Breast, 4 oz. | 4218101  |

**Food Service Breaded Chicken**



| Description                | Item No. |
|----------------------------|----------|
| Tyson Cooked Chicken Patty | 4235809  |
| Tyson Chicken Nugget       | 4235810  |
| Tyson Tempura Nugget       | 4238387  |

**Food Service Chicken Tenders**



| Description                       | Item No. |
|-----------------------------------|----------|
| Tyson Red Label                   | 4210187  |
| Tyson Brandywine                  | 4215765  |
| Tyson Steak House                 | 4216268  |
| Tyson Chicken                     | 4217441  |
| Tyson Select Cut                  | 4217744  |
| Tyson Pepper                      | 4218096  |
| Tyson Fully Cooked Chicken Tender | 4218364  |

**Food Service Chicken Wings**



| Description                        | Item No. |
|------------------------------------|----------|
| Tyson Fully Cooked Breaded Chicken | 4201500  |
| Tyson Fire Stinger                 | 4213680  |

**Breaded**



| Description                         | Item No. |
|-------------------------------------|----------|
| Q Breaded Mozzarella Sticks         | 4230467  |
| Q Battered Mozzarella Sticks        | 4230387  |
| Endico Breaded Mozzarella Sticks    | 4200863  |
| Endico Battered Mozzarella Sticks   | 4200862  |
| Endico Battered Onion Ring 6/2 lbs. | 4200864  |
| Fry Food Beer Battered Onion Ring   | 4200113  |
| Veal Patties 4 oz.                  | 4219009  |
| Veal Patties 6 oz.                  | 4299010  |

**On-Cor**



| Description            | Item No. |
|------------------------|----------|
| Cheese Nibbler Bulk    | 4220151  |
| Chicken Patties Bulk   | 4220158  |
| Chicken Strips Bulk    | 4220177  |
| Chicken Nibbler Bulk   | 4221500  |
| Chicken & Cheese Patty | 4220159  |
| Bagged Chicken Nibbler | 4295005  |
| Bagged Chicken Patty   | 4295805  |
| Bagged Chicken Strips  | 4297707  |

**Wraps**



| Description | Item No. |
|-------------|----------|
| Tyson Plain | 4207828  |

**Deli**

**Retail Murry's**



| Description                             | Item No. |
|---|----------|
| French Toast Sticks (6/14 oz.)          | 4201005  |
| Cinnamon French Toast Sticks (6/14 oz.) | 4201056  |
| Fish Sticks (6/32 oz.)                  | 4202424  |

**Vegetables, Frozen**



| Description                 | Item No. |
|-----------------------------|----------|
| Broccoli Florets 12/2 lbs.  | 4201007  |
| Cut Green Beans 12/2 lbs.   | 4201016  |
| Whole Green Beans 12/2 lbs. | 4201017  |
| Sliced Carrots 12/2 lbs.    | 4201018  |
| Cut Okra 12/2 lbs.          | 4201019  |
| Broccoli Normandy 12/2 lbs. | 4201068  |
| Cauliflower 12/2 lbs.       | 4201078  |
| Chop Spinach 12/2 lbs.      | 4202559  |
| Peas 12/2½ lbs.             | 4201013  |
| Mixed Veggies 12/2½ lbs.    | 4201014  |
| Cut Corn 12/2½ lbs.         | 4201015  |
| Collard Greens 12/3         | 4201081  |
| Corn Cobbs 5½"/48 count     | 4201155  |

**Sausage, Patties**



| Description                      | Item No. |
|----------------------------------|----------|
| Hormel Cooked Turkey 2 oz. Patty | 4206613  |
| Hormel Cooked 2 oz. Patty        | 4209080  |

**Retail Halal**



| Description                                   | Item No. |
|---|----------|
| Deen Halal Turkey Breakfast Slices, 12/12 oz. | 4136042  |
| Deen Halal Beef Breakfast Slices, 12/12 oz.   | 4106042  |
| Deen Halal Hot Turkey Sausage                 | 4101360  |
| Deen Halal Mild Turkey Sausage                | 4101340  |

|                             |         |
|-----------------------------|---------|
| Silver Lake FC IQF Meatball | 4291010 |
|-----------------------------|---------|



|  |         |
|--|---------|
| Philly's Best Beef Steak 12/1½ lbs.    | 1281444 |
| Philly's Best Chicken Steak 12/1½ lbs. | 1281555 |
| Philly's Best 5 oz. Beef Steak         | 4293435 |

|                          |         |
|--------------------------|---------|
| Al Safa Beef Gyro Slices | 4990007 |
| Al Safa Beef Patties     | 4991000 |
| Al Safa Chicken Patties  | 4991003 |
| Al Safa Chicken Strips   | 4991004 |
| Al Safa Chicken Nuggets  | 4991005 |
| Al Safa Beef Franks      | 4991006 |
| Al Safa Chicken Franks   | 4991092 |
| Al Safa Beef Meatballs   | 4991124 |



**Bulk Halal**



| Description                    | Item No. |
|--------------------------------|----------|
| Deen Halal Sliced Turkey Bacon | 4101635  |
| Deen Halal Sliced Beef Bacon   | 4107042  |

**Slicing Deli Halal**



| Description                | Item No. |
|----------------------------|----------|
| Deen Halal Beef Bologna    | 4101626  |
| Deen Halal Beef Salami     | 4101627  |
| Deen Halal Turkey Pastrami | 4101628  |
| Deen Halal Turkey Ham      | 4101630  |
| Deen Halal Turkey Salami   | 4101632  |

|                              |         |
|------------------------------|---------|
| Tay-Yib Pan Roasted Turkey   | 4116290 |
| Tay-Yib Smoked Turkey Breast | 4116291 |
| Tay-Yib Roast Beef Flat      | 4116997 |
| Tay-Yib Corned Beef Flat     | 4116998 |
| Tay-Yib Pastrami Flat        | 4116999 |



215-992-0900

www.quakervalleyfoods.com

**Beef.....5**

**2 Pc. Boneless Chucks**

Elkhorn Valley No Roll Angus..... 7

**Beef Back Ribs**

Circle T UT ..... 8

EVP Meaty. .... 8

Excel No Roll. .... 8

Nicholas Utility..... 8

**Beef Bones**

IBP Center Cut, 40 lb..... 9

Liffey Center Cut Femur, Frozen ..... 9

Nicholas 3-Piece Cut, 60 lb. .... 9

Nicholas Center Cut Femur, 30 lb. .... 9

**Beef Feet**

American..... 9

IBP..... 9

Cut Frozen White ..... 9

Carnic White Nicaraguan ..... 9

Southeastern Frozen..... 9

Rumba (Mexican) Frozen..... 9

**#1 Beef Tongues**

4 Star Black ..... 9

4 Star White ..... 9

Affco Steer ..... 9

Affco Veal..... 9

Liffey Irish 1 pc. Cryo..... 9

Nicholas White Cow..... 9

Nicholas Black ..... 9

**Beef Trimmings**

4 Star Frozen Cheek Meat..... 9

IBP 50/50 ..... 9

Excel 50/50 Frozen ..... 9

Flank Trim Rose ..... 9

Lt Ute Cheek Meat..... 9

**Bone-in Hind Shank**

Elkhorn Valley ..... 8

Nicholas 6-Piece..... 8

**Bottom Round Flat**

National Beef Choice ..... 8

National Beef Select..... 8

National No Roll..... 8

**Briskets**

Elk Horn Valley No Roll Angus..... 7

IBP Choice ..... 7

National Beef Choice ..... 7

**Burnt Feet**

Better Beef..... 9

St. Helens Canada ..... 9

**Chuck Clods**

National Choice..... 6

National Choice XT..... 6

National Select XT..... 6

Upper Iowa Angus Choice..... 6

**Chuck Roll**

Don Saul (Mexican) 4-Piece ..... 7

National Beef Choice ..... 7

National Beef No Roll Off..... 7

National Beef Select..... 7

Upper Iowa Angus Choice..... 7

**Chuck Tenders**

IBP Choice ..... 7

National Beef Choice ..... 7

Upper Iowa Angus Choice..... 7

**Eye Round**

National Choice..... 8

National No Roll..... 8

National Select..... 8

**Flanks**

National Beef Choice ..... 7

Nicholas Xtra Trim Rough ..... 7

**Flap Meat**

Don Saul (Mexican), Fresh ..... 7

Upper Iowa Sirloin Angus Choice..... 7

2701 Red Lion Road · Philadelphia, PA 19154

215-992-0900

www.quakervalleyfoods.com



**Flat Irons**

|                               |   |
|-------------------------------|---|
| 5 Star Choice Top Blade ..... | 6 |
| 5 Star Select Top Blade ..... | 6 |
| JBS Clear River No Roll ..... | 6 |

**Flat Round**

|                                     |   |
|-------------------------------------|---|
| IBP Choice ¼ inch .....             | 8 |
| IBP No Roll ¼ inch .....            | 8 |
| National Beef Choice ¼ inch .....   | 8 |
| National Beef Select ¼ Inch .....   | 8 |
| Upper Iowa Angus Choice ¼ Inch..... | 8 |
| National Beef No Roll ¼ inch .....  | 8 |

**Grinding Meat**

|                                |   |
|--------------------------------|---|
| Australian 85% AF/CHU .....    | 9 |
| Australian 95% Bull Meat ..... | 9 |
| Nicaraguan 95% Bull Meat.....  | 9 |

**Ground Beef**

|                                 |   |
|---------------------------------|---|
| National 81/19 Fine Grind ..... | 8 |
|---------------------------------|---|

**Hanging Tender**

|                  |   |
|------------------|---|
| EVP Peeled ..... | 8 |
|------------------|---|

**Heel Meat**

|               |   |
|---------------|---|
| American..... | 8 |
|---------------|---|

**Insides**

|                                    |   |
|------------------------------------|---|
| IBP Choice .....                   | 8 |
| IBP Choice XT .....                | 8 |
| IBP No Roll .....                  | 8 |
| National Beef Choice Cap Off.....  | 8 |
| National Beef Choice Denuded ..... | 8 |
| Upper Iowa Angus Choice XT .....   | 8 |

**Intestines**

|                     |   |
|---------------------|---|
| National Beef ..... | 9 |
|---------------------|---|

**Leg Tendons**

|                                      |   |
|--------------------------------------|---|
| JBS Beef Hind Leg, Frozen .....      | 9 |
| Nyriad Cooked Beef Tendon Ball ..... | 9 |
| Nicholas Flexor Frozen .....         | 9 |

**Neck Bones**

|             |   |
|-------------|---|
| 5 Star..... | 7 |
|-------------|---|

**Neck Bones (cont.)**

|                                 |   |
|---------------------------------|---|
| Don Saul (Mexican) Frozen ..... | 7 |
| Upper Iowa, Frozen .....        | 7 |

**Nose Off Briskets**

|                            |   |
|----------------------------|---|
| IBP Choice .....           | 7 |
| National Beef Choice ..... | 7 |

**Outside Skirts**

|                                 |   |
|---------------------------------|---|
| American No Roll Peeled.....    | 7 |
| SuKarne (Mexican), Frozen ..... | 7 |

**Oxtails**

|                                   |   |
|-----------------------------------|---|
| 4-Star Frozen Cow Oxtails .....   | 9 |
| FPL Cow Tails, Frozen .....       | 9 |
| EVP Trimmed, Frozen .....         | 9 |
| Excel Frozen Oxtail .....         | 9 |
| IBP Frozen .....                  | 9 |
| National Beef Fresh Oxtails ..... | 9 |
| Nicholas Cow Oxtails .....        | 9 |
| Upper Angus Choice, 4-piece ..... | 9 |
| AFFCO NL.....                     | 9 |

**Peeled Butt Tenderloins**

|                                 |   |
|---------------------------------|---|
| National Choice 2 pc. ....      | 6 |
| National Select 2 pc.....       | 6 |
| National Beef No Roll 2 pc..... | 6 |
| Don Saul Mexico, Fresh.....     | 6 |

**Peeled Knuckles**

|                               |   |
|-------------------------------|---|
| EVP Angus No Roll .....       | 8 |
| National Beef Choice .....    | 8 |
| Upper Iowa Angus Choice ..... | 8 |

**Peeled Tenderloins (PSMO)**

|                            |   |
|----------------------------|---|
| IBP Choice 5+.....         | 6 |
| Long Prairie Cow 5+ .....  | 6 |
| SuKarne (Mexican) 5+ ..... | 6 |

**Ribs-Bone In, Export**

|                               |   |
|-------------------------------|---|
| IBP Choice .....              | 6 |
| Upper Iowa Angus Choice ..... | 6 |
| IBP Select.....               | 6 |



**215-992-0900**

[www.quakervalleyfoods.com](http://www.quakervalleyfoods.com)

**Ribs-Bone In, Export (cont.)**

Don Saul (Mexican) 4-Piece ..... 6

**Rib Eyes—Boneless**

Heartland Angus ..... 6

IBP Choice ..... 6

National Beef Select..... 6

National Beef No Roll..... 6

Don Saul Mexican 6-Piece..... 6

**Semi-Boneless Chuck**

IBP Choice ..... 7

IBP No Roll ..... 7

IBP Select ..... 7

National Beef Choice ..... 7

National Beef Select..... 7

**Short Loins**

IBP Choice 0x1 ..... 6

IBP Select 0x1..... 6

Upper Iowa 0x1 Angus Choice ..... 6

Don Saul 0x1 Mexican 2-Piece ..... 6

**Short Ribs**

IBP Boneless Chuck ..... 8

National Beef Choice 9" Plate..... 8

National Beef Choice Bone-In Chuck ..... 8

Nicholas Utility 3 Bone..... 8

Nicholas Utility 4 Bone..... 8

Upper Iowa Angus Choice Chuck ..... 8

**Strip Loins**

Heartland Angus 0x1..... 6

IBP Choice 0x1 ..... 6

IBP Select 0x1..... 6

Upper Iowa 0x1 Angus Choice ..... 6

EVP Angus No Roll 0x1..... 6

SuKarne 0x1 Mexican..... 6

**Teres Major**

Elk Horn Valley..... 6

**Top Butts**

Elkhorn Valley No Roll Angus XT ..... 6

National Beef Choice XT ..... 6

National Beef Select XT ..... 6

National Beef No Roll ..... 6

Upper Iowa Choice XT ..... 6

Don Saul (Mexican) Fresh, 4-piece ..... 6

**Tripe**

3-3-3 Honeycomb 20 lbs. .... 9

3-3-3 Omasum 20 lbs. .... 9

3-3-3 Scalded 44 lbs. .... 9

IBP Honeycomb ..... 9

Nicholas Scalded Bleached..... 9

Nicholas Honeycomb Bleached ..... 9

4 Star Scalded..... 9

**Chicken ..... 15**

**¼ Legs**

Allen ..... 17

George's Medium..... 17

George's Small ..... 17

Mt. Aire CO2..... 17

Perdue..... 17

Pilgrim's CO2 Jumbo ..... 17

Pilgrim's Small ..... 17

Tyson..... 17

**Breasts**

**Bone-In**

Cookin' Good..... 16

Perdue..... 16

Pilgrim's Whole ..... 16

**Boneless**

George's ..... 16

House of Raeford Dry..... 16

House of Raeford Injected ..... 16

Mt. Aire ½ Super Trim ..... 16

Mt. Aire Blue Label..... 16





**Breasts (cont.)**

Mt. Aire Whole Super Trim ..... 16  
 Perdue Cutlets ..... 16  
 Pilgrim’s (Jumbo) ..... 16  
 Pilgrim’s (Small) ..... 16  
 Pilgrim’s Super Clean 4/10 lbs. .... 16

**Chunks**

George’s..... 16

**Cornish Hens**

Chef Choice..... 17  
 Golden Quail Jumbo 36 ct..... 17  
 Halal Golden Quail ..... 17  
 Perdue ..... 17

**Drum Sticks**

House of Raeford ..... 17  
 Perdue ..... 17  
 Pilgrim’s ..... 17  
 Sanderson ..... 17

**Fowl**

Heavy Frozen Tip Top ..... 17  
 Heavy Ice ..... 17  
 Light Ice..... 17  
 Stewing Hens (Frozen) ..... 17

**Frozen Paws**

Chicken Paws ..... 17  
 Perdue Jumbo Roaster Paw ..... 17  
 Sanderson ..... 17

**Gizzards/Livers/Hearts**

Gizzards ..... 17  
 Hearts ..... 17  
 Liver 6/5 lb. .... 17  
 Pilgrim 5 lb. Liver 8pk..... 17

**Legs**

House of Raeford ..... 16  
 Perdue ..... 16  
 Pilgrim’s Whole..... 16

**Necks/Backs**

Backs ..... 17  
 Skinless Neck..... 17

**Tenders**

House of Raeford Jumbo Clipped ..... 17

**Thighs**

**Bone-In**

House of Raeford CO2..... 16  
 Perdue..... 16

**Boneless**

House of Raeford ..... 16  
 Pilgrim’s..... 16  
 Eastern Shore Poultry ..... 16

**Wings**

**Fresh**

George’s 4/10 lbs. .... 16  
 George’s ..... 16  
 House of Raeford ..... 16  
 Perdue Small ..... 16  
 Perdue Medium ..... 16  
 Pilgrim’s Small ..... 16  
 Pilgrim’s Halal..... 16  
 Tyson..... 16

**Frozen**

Agro 4/10# IQF..... 16  
 Perdue CVP Whole Wing..... 16  
 Pilgrim’s Mis-cut Party Wings..... 16  
 Pilgrim’s Mis-cut..... 16  
 Shenandoah Roaster Portions..... 16

**Wings, Party**

George’s Medium..... 16  
 House of Raeford Jumbo ..... 16  
 Mt. Aire Medium..... 16  
 Sanderson Jumbo ..... 16  
 Tyson..... 16

**WOGS**

George’s 2¾-3 lbs. CVP..... 17



**215-992-0900**

[www.quakervalleyfoods.com](http://www.quakervalleyfoods.com)

**WOGS (cont.)**

|                                 |    |
|---------------------------------|----|
| George's 3-3¼ lbs. CVP .....    | 17 |
| George's 3¼-3½ lbs. CVP .....   | 17 |
| George's 3½-4 lbs. ....         | 17 |
| Mt. Aire 3 lbs. Fryer .....     | 17 |
| Mt. Aire 3 lbs. Shells .....    | 17 |
| Mt. Aire 3½ lbs. Shells.....    | 17 |
| Mt. Aire 4 lbs. Shells .....    | 17 |
| Perdue 3½ lbs. 12 Head .....    | 17 |
| Perdue Chicken 14 Head.....     | 17 |
| Pilgrim's 2¾ lbs. Ice.....      | 17 |
| Pilgrim's 3 lbs. CVP.....       | 17 |
| Pilgrim's 3¼ lbs. 22 Head ..... | 17 |
| Pilgrim's 3½ lbs. 20 Head.....  | 17 |

**Deli..... 30**

**Bacon, Beef**

|                                 |    |
|---------------------------------|----|
| Best Smoked Slab 3/10 lbs. .... | 35 |
| Godshall's Slab.....            | 35 |

**Bacon, Bulk**

|   |    |
|---|----|
| Hatfield 16/18 Hotel .....                | 36 |
| Hatfield 18/22 Chef Pleaser .....         | 36 |
| Hatfield 20/22 Hotel .....                | 36 |
| Hatfield Applewood Sliced Slab .....      | 36 |
| Hatfield Fresh Rindless Bacon.....        | 36 |
| Hatfield Sliced Slab 1/15 lbs.....        | 36 |
| Hatfield Sliced Slab 2/15 lbs.....        | 36 |
| Hatfield Slab Bacon .....                 | 36 |
| Hatfield Thick Sliced Slab 1/15 lbs. .... | 36 |
| Indiana 14/18 Hotel.....                  | 36 |
| Indiana 18/22 Hotel.....                  | 36 |
| Indiana 18/22 Layout.....                 | 36 |
| Kunzler Sliced Slab .....                 | 36 |
| Kunzler Sliced Slab Frozen .....          | 36 |
| JFM 14/18 Applewood Hotel Bacon .....     | 36 |
| JFM 18/18 Applewood Layout Bacon .....    | 36 |
| JFM 18/22 Hickory Layout Bacon.....       | 36 |

**Bacon, Retail - Beef**

|                                      |    |
|--------------------------------------|----|
| Godshall's Retail Beef 12/12 oz..... | 35 |
|--------------------------------------|----|

**Bacon, Retail - Pork**

|                          |    |
|--------------------------|----|
| Butcher Wagon 1 lb. .... | 35 |
| Indiana 1 lb.....        | 35 |
| Jamestown 1 lb. ....     | 35 |
| Smithfield 1 lb. ....    | 35 |

**Bacon, Retail - Turkey**

|   |    |
|---|----|
| Godshall's Retail Turkey Bacon 12/12 oz. .... | 35 |
| Godshall's Retail Maple Turkey 12/12 oz.....  | 35 |

**Bacon, Turkey**

|                              |    |
|------------------------------|----|
| Godshall's Slab Sliced ..... | 35 |
| Godshall's Slab Bulk .....   | 35 |

**Bakery**

|                    |    |
|--------------------|----|
| Salt, 50 lbs. .... | 37 |
|--------------------|----|

**Bottle Sauce**

|                                     |    |
|-------------------------------------|----|
| Frank's Red Hot Sauce 4 Gallon..... | 39 |
| Lion Grillblazin' BBQ.....          | 39 |

**Breaded**

|   |    |
|---|----|
| Endico Mozzarella Sticks .....            | 41 |
| Endico Battered Onion Ring 6/2 lbs.. .... | 41 |
| Endico Battered Mozzarella Sticks .....   | 41 |
| Fry Food Beer Battered Onion Ring.....    | 41 |
| Q Battered Mozzarella Sticks .....        | 41 |
| Q Breaded Mozzarella Sticks.....          | 41 |
| Veal Patties 4 oz. ....                   | 41 |
| Veal Patties 6 oz. ....                   | 41 |

**Breading**

|                             |    |
|-----------------------------|----|
| Colonel Jim's Chicken ..... | 33 |
|-----------------------------|----|

**Bulk Bologna**

|                             |    |
|-----------------------------|----|
| Butcher Wagon .....         | 33 |
| Hatfield Beef .....         | 33 |
| Hatfield Bologna.....       | 33 |
| Hatfield German.....        | 33 |
| Seltzer Lebanon.....        | 33 |
| Seltzer Sweet Lebanon ..... | 33 |



**Bulk Salami**

Butcher Wagon Cook ..... 33  
 Hatfield Beef ..... 33  
 Hatfield Hoagie ..... 33

**Bulk Slicing Deli**

Hatfield Coteghino ..... 33  
 Hatfield Liverwurst..... 33

**Burgers**

Philly Gourmet 4 oz. Patty 12/2 lbs..... 34  
 Philly Gourmet Patty 4 oz. 6/4 lbs. .... 34  
 Philly Homestyle Beef 4 oz. Patty 12/2 lbs..... 34  
 Philly Homestyle Beef 4 oz. Patty 6/4 lbs..... 34  
 Q Beef 4 oz. 10 lbs.. ..... 34  
 Q Beef 5 oz. 10 lbs... ..... 34  
 Q Beef 8 oz. 10 lbs.. ..... 34

**Butter**

¼ Salt Butter..... 37  
 Admiration Blend..... 37  
 Admiration Solid OLEO ..... 37  
 Dew Fresh OLEO Quarters ..... 37  
 Salted Solid ..... 37

**Canned**

Heinz Ketchup 6/10 lbs. .... 39  
 Hunts Ketchup 6/10 lbs. .... 39  
 Main Street Cheese Sauce 6/10 lb. .... 39  
 Muy Fresco Cheddar Cheese Sauce ..... 39  
 Stems & PCS Mushrooms ..... 39

**Canned Tuna**

Premium Skip Jack Light ..... 39  
 Premium Solid White ..... 39  
 Tongol Tuna ..... 39

**Casings**

Hanks Hog 32/35 mm ..... 41

**Cheese**

**Cheese, American - Loaf**

Bongard Super Melt White Loaf 6/5 lbs. .... 31

**Cheese, American - Loaf (cont.)**

Bongard Super Melt Yellow Loaf 6/5 lbs. ....31  
 Clearfield White 6/5 lbs. ....31  
 Land O’ Lakes White Loaf 6/5 lbs. ....31  
 Land O’ Lakes Yellow Loaf 6/5 lbs. ....31  
 Main Street White Loaf 6/5 lbs. ....31  
 Naturally Slender White 2/5 lbs. ....31  
 New Yorker White Loaf 6/5 lbs. ....31

**Cheese, American - Sliced**

Great Lakes White 12/16 oz. ....31  
 Great Lakes Yellow 12/16 oz. ....31  
 Main Street 120 Count White .....31  
 Main Street 160 Count White .....31  
 Main Street 160 Count Yellow .....31  
 Plain Label 160 Count 4/5 lbs. White .....31  
 Plain Label 160 Count 4/5 lbs. Yellow .....31  
 Unique Sand 160 Pull 4/5 lbs. White.....31  
 Unique Sand 160 Pull 4/5 lbs. Yellow.....31

**Cheese, Cheddar**

Cooper CV White Sharp 6/5 lbs. ....31  
 Cooper CV Yellow Sharp 6/5 lbs. ....31  
 Main Street Shredded 6/5 lbs. ....31  
 Great Lakes Mild White 10 lbs. ....31  
 Great Lakes Mild Yellow 10 lbs. ....31  
 Great Lakes Sharp White 10 lbs. ....31  
 Great Lakes Sharp Yellow 10 lbs.....31

**Cheese, Mozzarella**

Jacobo Part Skim Milk Loaf.....31  
 Jacobo Shredded 6/5 lbs. Part Skim.....31  
 Lennor Whole Milk Loaf .....31  
 Rialto Shredded Whole Milk 6/5 lbs.....31  
 Sartori Part Skim Milk Loaf.....31  
 Sartori Whole Milk Loaf .....31  
 Lugano Whole Mike Loaf 8/6 lbs.....31

**Cheese, Provolone**

Belgioioso 2/12 lbs. ....31  
 Belgioioso Half Moon.....31



215-992-0900

[www.quakervalleyfoods.com](http://www.quakervalleyfoods.com)

**Provolone (cont.)**

Belgioioso Pear Sharp ..... 31  
Belgioioso Sharp ..... 31  
Galbani Smoked ..... 31  
Lennor 3/12 lbs. .... 31  
Rialto ½ 6/6 lbs. .... 31  
Sartori Aged 2/25 lbs. .... 31  
Stella ¼, 6/6 lbs. .... 31  
Stella 3/12 lbs. .... 31

**Cheese, Specialty**

Caddy Creek Yellow Mini Longhorn 2/6 lbs. .... 32  
Great Lake Muenster 6/6 lbs. .... 32  
Hormel Pepperoni & Cheese 2/5 lbs. .... 32  
Jacob Shredded Monterey Jack 6/5 lbs. .... 32  
Land O'Lakes Italian Blend 2/5 lbs. .... 32  
Munchee 2/5 lbs. .... 32  
NY'er/Land O' Lakes Pepper Cheddar 2/5 lbs. .... 32  
Pauly Cream Cheese ..... 32  
Great Lakes Pepper Jack 10 lbs. .... 32  
Raskas 30 Bulk Cream Cheese ..... 32  
Rialto Grated Parmesan 4/5 lbs. .... 32  
Rialto Grated Romano 4/5 lbs. .... 32

**Cheese, Swiss**

Alpine Lace..... 31  
Corner Stone..... 31  
Great Lakes Full Cut ..... 31  
Great Lakes Sandwich Cut ..... 31  
Jarlsberg Lite 10 lbs. .... 31  
Jarlsberg Square..... 31  
Lorraine Original Block 10 lbs. .... 31  
Valio Full Cut..... 31  
Valio Sandwich Cut ..... 31

**Coteghino**

Hatfield Coteghino..... 33

**Chicken**

Mrs. Ressler's Buffalo Style..... 37

**Cooking Wine**

Sherry 4/1 Gallon ..... 38

**Corned Beef**

Elite Cooked Beef 1/2..... 33

**Corned Beef (cont.)**

Main Street Pickled Brisket ..... 33  
Saval Whole Cooked Brisket..... 33

**Cracklins**

American Bulk Cracklins ..... 36

**Dessert**

Kozy Shack Rice Pudding 2/4 lb. .... 39

**Dressings**

Admiration Salad Style Mustard..... 38  
Admiration White Vinegar ..... 38  
Cabot Sour Cream 6/5 lbs. .... 38  
Frank's Red Hot Sauce 4/1 Gallon ..... 38  
Gator Horse Radish ..... 38  
Ken's Blue Cheese Cups ..... 38  
Ken's Honey Mustard 1½ oz. Cups ..... 38  
Ken's Ranch 100/1.5 oz. Cups ..... 38  
Nugget Cocktail Sauce..... 38  
Lion Grill Blazin BBQ Sauce..... 38  
Supreme White Vinegar ..... 38  
Sweet Baby Ray's BBQ Sauce ..... 38

**Dried Beef**

Carson 4 oz. Package..... 36  
Knauss Smoked Knuckle ..... 36  
Knauss Chipped ..... 36

**Eggs**

Extra Large Cart 15 Dozen ..... 37  
Extra Large Loose 15 Dozen ..... 37  
Large Cart 15 Dozen ..... 37

**Food Service Breaded Chicken**

Tyson Chicken Nugget ..... 41  
Tyson Cooked Chicken Patty ..... 41  
Tyson Tempura Nugget ..... 41



**Food Service Chicken Tenders**

Tyson Brandywine ..... 41  
 Tyson Chicken ..... 41  
 Tyson Fully Cooked Chicken Tender ..... 41  
 Tyson Pepper ..... 41  
 Tyson Red Label ..... 41  
 Tyson Select Cut..... 41  
 Tyson Steak House..... 41

**Food Service Chicken Wings**

Tyson Fire Stinger ..... 41  
 Tyson Fully Cooked Breaded Chicken ..... 41

**Food Service Grilled**

Tyson Chicken Breast 4 oz ..... 41

**Franks**

Bar S Jumbo Beef 12/1 lb. .... 35  
 Bar S Jumbo Meat 24/1 lb. .... 35  
 Bar S Meat Family Pack 8/3 lbs. .... 35  
 Bar S Tasty Chicken 24/1 lb..... 35  
 Bar S Chicken Family Pack 8/3 lbs..... 35  
 Bar S Turkey 12/1 lb..... 35  
 Bar S Turkey Family Pack 8/3 lbs. .... 35  
 Hatfield Bulk Beef 6/3 lbs. .... 35  
 Hatfield Beef 2/5 lbs. .... 35

**Fries**

**Crinkle**

Club..... 40  
 Snospud ..... 40  
 Western Hills ..... 40

**Regular Fries**

Club 3/8 Regular ..... 40  
 Snospud 1/30 ..... 40  
 Western 3/8..... 40

**Specialty Fries**

Cavendish Straight 3/8 Coated ..... 40  
 McCain Redstone Curly..... 40  
 McCain Sweet Potato ..... 40  
 St. Arneault Shoestring..... 40

**Fries (cont.)**

**Steak Fries**

Club ..... 40  
 Snospud..... 40

**Halal, Bulk**

Deen Halal Sliced Beef Bacon ..... 43  
 Deen Halal Sliced Turkey Bacon ..... 43

**Halal, Retail**

Al Safa Beef Franks ..... 43  
 Al Safa Beef Gyro Slices ..... 43  
 Al Safa Beef Meatballs ..... 43  
 Al Safa Beef Patties ..... 43  
 Al Safa Chicken Franks..... 43  
 Al Safa Chicken Nuggets..... 43  
 Al Safa Chicken Patties ..... 43  
 Al Safa Chicken Strips..... 43  
 Deen Halal Beef Breakfast Slices 12/12 oz. .... 43  
 Deen Halal Hot Turkey Sausage ..... 43  
 Deen Halal Mild Turkey Sausage ..... 43  
 Deen Halal Turkey Breakfast Slices 12/12 oz. .... 43  
 Philly's Best 5 oz. Beef Steak ..... 43  
 Philly's Best Beef Steak 12/1½ lbs. .... 43  
 Philly's Best Chicken Steak 12/1½ lbs. .... 43  
 Silver Lake FC IQF Meatball..... 43

**Halal, Slicing Deli**

Deen Halal Beef Bologna..... 43  
 Deen Halal Beef Salami ..... 43  
 Deen Halal Turkey Ham..... 43

**Halal, Slicing Deli**

Deen Halal Turkey Pastrami ..... 43  
 Deen Halal Turkey Salami..... 43  
 Tay-Yib Corned Beef Flat ..... 43  
 Tay-Yib Pan Roasted Turkey ..... 43  
 Tay-Yib Pastrami Flat..... 43  
 Tay-Yib Roast Beef Flat..... 43  
 Tay-Yib Smoked Turkey Breast..... 43



**215-992-0900**

[www.quakervalleyfoods.com](http://www.quakervalleyfoods.com)

**Ham, Cooked**

Chefs Choice 10% Ham ..... 32  
 Hormel 10% ..... 32  
 Hormel 35% ..... 32  
 Hormel Premium Low Sodium Ham ..... 32  
 Smithfield 10% ..... 32

**Ham, Imported**

Deliham Water Added ..... 32  
 Krakus ..... 32  
 Valhalla Gold 2/12 lbs. .... 32  
 Valhalla Gold Natural Juice ..... 32

**Ham, Retail**

Hatfield 1/4 Country Style ..... 32  
 Hatfield Whole Country Style ..... 32  
 Smithfield 1/2 Spiral ..... 32

**Ham, Specialty**

Armour Honey ..... 32  
 Armour Virginia. .... 32  
 Berks Cooked Round Pepper ..... 32  
 Berks Tavern ..... 32  
 Butcher Wagon Canadian ..... 32  
 Eckrich Pepper ..... 32  
 Hatfield Pepper ..... 32  
 Hatfield Honey Ham..... 32  
 Hatfield Virginia ..... 32  
 Hatfield Tavern ..... 32  
 Hormel Oval Spiced Ham ..... 32  
 Hormel S/M Chopped ..... 32  
 Prima Porta Hot Ham..... 32  
 Smithfield Virginia ..... 32

**Lard**

Hatfield Can 47 lbs. .... 38  
 Leidy Lard 14 oz. .... 38

**Liverwurst**

Hatfield Liverwurst 3/6 lb. .... 38  
 Hatfield Liverwurst 12/1 lb. .... 38

**Mayo**

Admiration 4/1 Gallon.....37  
 Admiration Red Label.....37  
 Admiration Tub 5 Gallon .....37  
 Hellman’s 4/1 Gallon .....37

**Meatballs**

Buon Gusto 1 oz. Turkey .....40  
 Main Street Chicken & Beef 1 oz. ....40  
 Rialto 1/2 oz. All Beef .....40  
 Rialto 1 oz. All Beef .....40  
 Rialto 2 oz. All Beef .....40  
 Silver Halal Beef & Chicken .....40

**Oil**

Admiration Canola .....37  
 Admiration Soya.....37  
 Divo 10% Blended .....37  
 Magic Chef Creamy .....37  
 Magic Fry Clear.....37  
 Nipon Sesame Oil 8½ Gallon .....37  
 Premier Salad .....37  
 Sesame .....37

**On-Cor**

Bagged Chicken Nibbler .....41  
 Bagged Chicken Patty.....41  
 Bagged Chicken Strips.....41  
 Cheese Nibbler Bulk .....41  
 Chicken & Cheese Patty .....41  
 Chicken Nibbler Bulk .....41

**On-Cor**

Chicken Patties Bulk .....41  
 Chicken Strips Bulk .....41

**Pastrami**

Berkshire Farms 1/2 .....33  
 Elite 1/2 Flats .....33  
 Saval 1<sup>st</sup> Cut.....33



**Patties (Jamaican Beef & Chicken)**

Tower Jamaican Beef Patty Mild Bulk..... 34  
 Tower Jamaican Beef Patty Hot Bulk ..... 34  
 Tower Jamaican Beef—Hot 3 pk. Retail..... 34  
 Tower Jamaican Beef—Hot 9 pk. Retail..... 34  
 Tower Jamaican Beef—Mild 3 pk. Retail ..... 34  
 Tower Jamaican Beef—Mild 9 pk. Retail ..... 34  
 Tower Jamaican Chicken—Mild 3 pk. Retail ..... 34  
 Tower Jamaican Chicken—Mild 9 pk. Retail ..... 34

**Pepperoni**

Hormel Bold Sliced 2/5 lbs..... 34  
 Hormel Long Slicer lb. .... 34  
 Hormel Rosa Grande 10 lbs. .... 34  
 Hormel Sandwich (Leoni)..... 34  
 Margherita Fine Sticks 10 lbs. .... 34  
 Margherita Sliced 2/5 lbs. .... 34

**Peppers**

BG/SD Sliced Cherry 4/1 Gallon ..... 39  
 BG/SD Chopped Cherry 1 Gallon ..... 39  
 San Sliced Banana 4/1 Gallon ..... 39  
 San Sweet 4/1 Gallon..... 39  
 Whole Hot Cherry 4/1 Gallon ..... 39

**Pickles**

K-Z Large 30 Count..... 38  
 Main Street 30 Count ..... 38  
 Main Street Chips 5 Gallons..... 38  
 Main Street Spears 5 Gallons..... 38  
 Relish 4/1 Gallon..... 38  
 SAN/BG Hamburger Chips 4/1 Gallon..... 38

**Pizza Toppings**

Hormel Fast & Easy Cooked Bacon ..... 35  
 Hormel Pre-Cut Pepperoni ..... 35

**Pork Roll**

Hatfield Bulk ..... 35  
 Hatfield 10/1 lb. .... 35  
 Taylor 12/1 lbs. .... 35  
 Taylor 2/6 lbs. .... 35

**Pork Roll (cont.)**

Taylor 4/3 lbs. .... 35  
 Taylor Thick Slice 12/6 lb. .... 35  
 Taylor Thin Slice 12/6 lbs. .... 35  
 Trenton 2/6 lbs. .... 35

**Prosciutto**

Carando..... 34  
 Margherita ..... 34

**Protein Salads**

Main Street Egg..... 39  
 Main Street Roasted Red Pepper ..... 39  
 Main Street Seafood ..... 39  
 Main Street Shrimp ..... 39  
 Main Street Tuna..... 39  
 Main Street White Chicken ..... 39  
 Packer Bruschetta ..... 39

**Retail Murry's**

Cinnamon French Toast Sticks (6/14 oz.) ..... 42  
 Fish Sticks (6/32 oz.)..... 42  
 French Toast Sticks (6/14 oz.) ..... 42

**Retail Slicing Deli**

Hatfield Liverwurst 12/1 lb. .... 33

**Roast Beef**

Elite 1/2..... 33  
 Mrs. Ressler's Flat 1/2..... 33  
 Saval Whole Cap Off..... 33

**Ready to Cook Turkey Breasts**

Agro Skin-On Cook-n-Bag 2/11 lb. Net..... 37  
 Agro Skin-On Cook-n-Bag Net 2/9 lb. .... 37  
 Pittman Farms Sweetheart Foil ..... 37  
 Pittman Farms Sweetheart, 10/12 lbs. Plastic..... 37  
 Roasted Turkey Breast 15%..... 37  
 Turkey Valley Farm Foil Skin-On 8-12 2/10 lb. .... 37  
 Turkey Valley Farm Cook-n-Bag 3/9 lb. .... 37  
 Turkey Valley Farm Netted 10-12 2/11 lb. .... 37

**Salami Genoa**

Citterio Ciao ..... 34



**215-992-0900**

[www.quakervalleyfoods.com](http://www.quakervalleyfoods.com)

**Salami Genoa (cont.)**

Hormel Dilusso..... 34  
 Hormel Magnifico ..... 34  
 Lido ..... 34

**Salami Hard**

Sterling Hard ..... 34  
 Hormel Magnifico Hard ..... 34

**Sauerkraut**

Kissling ..... 38

**Sausage Patties**

Hormel Cooked 2 oz. Patty ..... 42  
 Hormel Cooked Turkey 2 oz. Patty..... 42

**Sausage Rolled**

Arnold 40 oz. Turkey Sausage ..... 34  
 Arnold Smoked Hot Beef ..... 34  
 Arnold Smoked Mild Beef ..... 34  
 CVF Beef Hot..... 34  
 CVF Beef Mild ..... 34  
 Godshall’s Mild Turkey Sausage ..... 34  
 Godshall’s Hot Turkey Sausage ..... 34  
 Hatfield Polish Kielbasa..... 34

**Scrapple**

Godshall’s Turkey 1 lb. .... 35  
 Hatfield Beef 5 lb. .... 35  
 Hatfield Pork 1 lb. .... 35  
 Leidy’s Pork 1 lb. .... 35

**Sopressata**

Hormel Sweet ..... 35

**Steaks, Sandwich**

Main Street 4 oz. Beef ..... 40  
 Main Street 6 oz. Beef ..... 40  
 Philly Gourmet All Beef 12/21 oz. .... 40  
 Philly’s Best 4 oz. Beef ..... 40  
 Philly’s Best 5 oz. Beef ..... 43  
 Q 4 oz. Chicken ..... 40  
 Silver Spring Beef ..... 40

**Steaks, Sandwich (cont.)**

Silver Spring Chicken ..... 40

**Turkey Breast Brown**

Butterball Just Perfect ..... 36  
 Carolina Deluxe ..... 36  
 Holiday Pan Roasted Braised..... 36  
 Main Street Pan Roasted..... 36  
 Norbest Signature Classics ..... 36  
 Ressler’s Braised Turkey Breast..... 36

**Turkey Breast Smoked**

Butterball Just Perfect ..... 36  
 Carolina ..... 36  
 Carolina Deli ..... 36  
 Carolina Deluxe ..... 36

**Turkey Breast White**

Carolina Deli ..... 36  
 Carolina Deli Delight..... 36  
 Carolina Deluxe ..... 36

**Turkey Honey**

Butterball Smoked Honey Breast ..... 36  
 Jennie-O Mesquite Smoked Honey Breast... 36

**Turkey, Specialty**

Butterball Hickory Smoked Turkey Ham..... 36  
 Carolina Pastrami ..... 36  
 Jennie-O Turkey Ham ..... 36  
 Ressler’s Cajun ..... 36  
 Ressler’s Pepper ..... 36

**Wet Salads**

Endico Cole Slaw ..... 39  
 Endico Macaroni ..... 39  
 Endico Potato..... 39

**Wraps**

Tyson Plain ..... 41

**Vegetables, Frozen**

Broccoli Florets 12/2 lbs. .... 42  
 Broccoli Normandy 12/2 lbs. .... 42

**2701 Red Lion Road · Philadelphia, PA 19154**





**Vegetables, Frozen (cont.)**

Cauliflower 12/2 lbs. .... 42  
 Collard Greens 12/3 lbs. .... 42  
 Corn Cobbs 5½"/48 Count ..... 42  
 Cut Corn 12/2½ lbs. .... 42  
 Cut Green Beans 12/2 lbs. .... 42  
 Cut Okra 12/2 lbs. .... 42  
 Mixed Veggies 12/2.5 lbs. .... 42  
 Peas & Carrots 12/2.5 lbs. .... 42  
 Peas 12/2½ lbs. .... 42  
 Sliced Carrots 12/2 lbs. .... 42  
 Whole Green Beans 12/2 lbs. .... 42

**Duck ..... 19**

**Grade A**

Culver 4.0..... 19  
 Culver 4.5..... 19  
 Culver 5.0..... 19  
 Culver 5.5..... 19

**HOFO (Head on Feet on)**

**Buddha**

Culver Bulk 27 lbs. USA ..... 19  
 Culver Bulk 30 lbs. USA ..... 19  
 Culver Bulk 33 lbs. USA ..... 19  
 Culver Bulk 36 lbs. USA ..... 19  
 Culver COV 24 lbs. USA ..... 19  
 Culver COV 27 lbs. USA ..... 19  
 Culver COV 28 lbs. USA ..... 19  
 Culver COV 30 lbs. USA ..... 19  
 Culver COV 36 lbs. USA ..... 19

**Confucian**

Crescent 31 lbs. USA ..... 19  
 Crescent 33 lbs. USA ..... 19  
 Crescent 35 lbs. USA ..... 19  
 Crescent 36 lbs. USA ..... 19  
 Crescent 37 lbs. USA ..... 19  
 Crescent 41 lbs. USA ..... 19

**HOFO (Head on Feet on) (Cont.)**

Crescent 42 lbs. USA ..... 19

**Plant Grade**

Quack on a Rack 4.0 ..... 19  
 Quack on a Rack 4.5 ..... 19  
 Quack on a Rack 5.0 ..... 19  
 Quack on a Rack 5.5 ..... 19  
 Quack on a Rack 6.0 ..... 19  
 Valley Forge 3.0 ..... 19  
 Valley Forge 3.5 ..... 19  
 Valley Forge 4.0 ..... 19  
 Valley Forge 4.5 ..... 19  
 Valley Forge 5.0 ..... 19  
 Valley Forge 5.5 ..... 19  
 Valley Forge 6.0 ..... 19

**Goat ..... 21**

**6-Piece**

Australian Burnt ..... 21  
 Cedar Australian ..... 21  
 McPhee Australian Burnt ..... 21

**Goat 6-Piece (cont.)**

McPhee CS Australian ..... 21  
 SuCabrito (Mexican) ..... 21

**Cubes**

Cedar Blended 16x1 kg. Bag ..... 21  
 Goat/Mutton ..... 21

**Offal**

Australian Heads 8 Per Box ..... 21  
 Western Kidney ..... 21

**Lamb ..... 21**

**Carcass**

Australian ..... 21  
 Chile ..... 21  
 New Zealand ..... 21

**Leg Bone-In**

Australian ..... 21



**215-992-0900**

[www.quakervalleyfoods.com](http://www.quakervalleyfoods.com)

**Leg Boneless**

Australian Major Brands ..... 21  
 Thomas Australian ..... 21

**Loins**

Australian..... 21

**Rack (French)**

New Zealand 12-14 ..... 21  
 New Zealand 14-16 ..... 21  
 New Zealand 16-18 ..... 21  
 New Zealand 18-20 ..... 21

**Shank/Offal**

Australian Burnt Sheep Feet ..... 21  
 Australian Hind Shanks ..... 21  
 Australian Scalded Sheep Feet..... 21  
 New Zealand Tripe ..... 21

**Shoulder**

Australian Bone-In ..... 21  
 Australian Boneless ..... 21  
 New Zealand Bone-In..... 21

**Mutton ..... 22**

**6-Piece**

McPhee M-CC 45 DN ..... 22  
 Midfield ..... 22  
 T&R Thomas..... 22  
 Wagstaff..... 22

**Leg Bone-In**

Prime Range New Zealand ..... 22  
 Te Kuiti New Zealand ..... 22  
 Thomas Australian ..... 22

**Leg Boneless**

Australian..... 22  
 New Zealand..... 22

**Shanks**

Fletcher Australian..... 22  
 Prime Range New Zealand ..... 22

**Pork ..... 10**

**Back Ribs**

**Fresh**

Smithfield ..... 11

**Frozen**

Hatfield ..... 11  
 Hylife ..... 11  
 IBP ..... 11  
 Indiana ..... 11  
 Smithfield ..... 11  
 Swift 6/3 pc. .... 11

**Bellies**

**Fresh**

Daisy Rib Bone in Rin on ..... 12  
 Daisy Rind On ..... 12  
 Hylife Rind Off ..... 12

**Frozen**

Auroa Bone in Belly ..... 12  
 Costa Brava Rind Off ..... 12  
 Costa Brava Rind On ..... 12  
 Hylife Billy Bone in Belly ..... 12  
 Hylife BNLS Rind Off ..... 12  
 Keken BNLS Rind Off ..... 12  
 Keken Bone in Belly ..... 12  
 Leidy Sweet Pickled ..... 12  
 Skiba Billy Bone in Belly ..... 12  
 Skiba BNLS Rind On ..... 12

**Blood**

USA ..... 14

**Bones**

A&R Smoked ..... 13  
 Daisy Smoked Neck ..... 13  
 Ferris Smoked Neck..... 13  
 Hatfield Chine..... 13  
 IBP Neck ..... 13  
 Indiana Neck ..... 13



**Bones (cont.)**

Leidy Chine ..... 13  
 Oviande Femur ..... 13  
 Seaboard Neck..... 13  
 USA Neck ..... 13

**Bone-In Loins**

IBP..... 11  
 Indiana ..... 11  
 Seaboard..... 11  
 Smithfield..... 11  
 Smithfield CC ..... 11

**Boneless Loins**

IBP..... 11  
 Hatfield CC ..... 11  
 Seaboard..... 11  
 Smithfield..... 11  
 Smithfield..... 11  
 Think Pork Chop CC..... 11

**Bung**

IBP..... 14  
 Indiana ..... 14  
 Leidy ..... 14  
 Leidy Spleen..... 14

**Butts**

**Bone-In**

Indiana ..... 11  
 Leidy ..... 11  
 Smithfield..... 11

**Boneless**

IBP CT ..... 11  
 Hylife CT..... 11  
 Hylife ..... 11  
 Indiana ..... 11  
 Leidy ..... 11  
 Seaboard..... 11  
 Smithfield..... 11

**Chitterlings: Frozen**

Audies 6/5 lbs. Bag..... 13  
 Aunt Bessie 9/5 lbs. .... 13  
 Danish Crown 9/5 lbs. .... 13  
 IBP 6/10 lbs. .... 13

**Chitterlings: Cooked**

Global Delights 280z /5lbs ..... 13

**Ears**

Seaboard Ears ..... 13  
 Hatfield Ears ..... 13

**Fatback Back**

Bonavista Salted..... 14  
 Daisy Rindless..... 14  
 Daisy Salted ..... 14  
 Olymel ..... 14  
 Smithfield ..... 14

**Hams**

Hatfield..... 12  
 Indiana Fresh Bone-In 20/23 ..... 12  
 Leidy Fresh Bone-In..... 12  
 Leidy BRT..... 12  
 Seaboard ..... 12

**Hams, Smoked**

Daisy 17/20 ..... 12  
 Daisyfield Picnic..... 12  
 Hatfield Country Style ..... 12  
 Hatfield Picnic ..... 12  
 Southampton Cloth ..... 12

**Hearts**

Daisyfield 50 lbs. .... 14  
 Hatfield ..... 14  
 Seaboard 30 lbs. .... 14

**Hocks**

Daisy Frozen ..... 13  
 Daisy Smoked ..... 13



**215-992-0900**

[www.quakervalleyfoods.com](http://www.quakervalleyfoods.com)

**Jowls, Frozen**

Indiana ..... 13  
 JBS..... 13  
 Sioux Preme ..... 13

**Kidneys, Frozen**

Hatfield ..... 13

**Livers, Frozen**

Daisyfield ..... 13  
 Hatfield ..... 13

**Picnics**

Hatfield Bone-In ..... 11  
 Hylfife Boneless ..... 11  
 Indiana Bone-In..... 11  
 Leidy Bon-In ..... 11  
 Seaboard Cushion Meat ..... 11  
 Smithfield Bone-In ..... 11  
 USA Bone-In (Paper Wrapped) ..... 11

**Pigs Feet, Frozen**

Conestoga Lacone ..... 12  
 Daisy Long Cut ..... 12  
 Daisy Hind Feet..... 12

**Pigs Feet, Frozen**

Daisy Salted ..... 12  
 Hatfield Lacone ..... 12  
 Hormel Hind Feet..... 12  
 IBP Front Feet ..... 12  
 IBP Hind Feet ..... 12  
 Seaboard Front Feet ..... 12  
 Smithfield Lacone ..... 12  
 Seaboard Hind Feet ..... 12  
 USA Hind Feet ..... 12

**Sausage**

**Breakfast**

Fresh 1 oz. .... 12  
 Fresh 2 oz. .... 12  
 Frozen 2 oz. Patties ..... 12

**Sausage (cont.)**

**Ethnic**

Leidy Andouille..... 12  
 Leidy Chorizo ..... 12

**Italian**

Hot Link ..... 12  
 Hot Rope ..... 12  
 Sweet Link ..... 12  
 Sweet Rope ..... 12

**Snouts**

LBP ..... 14  
 Leidy ..... 14

**Spare Ribs**

**Lite**

IBP ..... 11  
 Indiana ..... 11  
 Seaboard ..... 11  
 Smithfield ..... 11

**Medium**

IBP ..... 11  
 Indiana ..... 11  
 Seaboard ..... 11  
 Smithfield ..... 11

**Danish**

Aunt Bessie, 10 lbs. .... 11  
 Majesty, 10 lbs. .... 11

**St. Louis Ribs, Frozen**

98 Packing ..... 11  
 Daisyfield..... 11  
 Aunt Bessie..... 11

**Stomachs, Frozen**

Aunt Bessie..... 13  
 Daisyfield..... 13  
 Hatfield..... 13  
 Indiana ..... 13  
 Sioux Preme ..... 13



**Stomachs, Frozen (cont.)**

Swift ..... 13

**Tails**

Hatfield Salted ..... 13

Leidy ..... 13

Smithfield..... 13

Smithfield Tray Pack ..... 13

**Tenderloins**

Hatfield ..... 11

IBP..... 11

Smithfield..... 11

**Tongues**

Hatfield ..... 14

IBP Unscaled ..... 14

Swift ..... 14

Swift, Unscaled, Tip On ..... 14

**Trimmings**

IBP Coarse Ground, 80% ..... 14

Pork Packer, 72% ..... 13

Smithfield, 72%..... 14

**Whole Pig, Frozen**

10/20 lbs. .... 14

20/30 lbs. .... 14

30/35 lbs. .... 14

30/40 lbs. .... 14

35/40 lbs. .... 14

40/50 lbs. .... 14

50/60 lbs. .... 14

60/70 lbs. .... 14

70/80 lbs. .... 14

80/90 lbs. .... 14

90/100 lbs. .... 14

100/100 lbs. .... 14

110/120 lbs. .... 14

110/130 lbs. .... 14

100/119 lb. Boxed..... 14

**Rabbit .....21**

**Whole Rabbit**

Chinese 44.1 lb. ....21

**Seafood.....23**

**Catfish Fillets**

Channel Catfish Fillet 5/7 oz. 15 lbs. ....28

Channel Catfish Fillet 7/9 oz. 15 lbs. ....28

**Clams & Scallops, Breaded**

Stuffed Clams 12/20 oz. 9 Pack .....26

Matlaw’s Stuffed Scallops 12/8 oz. 9 Pack .....26

**Crab Cakes**

Wholey Retail 5 pack.....26

Foodservice Pack 2/5 Lb.....26

**Crab, Cleaned**

Jaiba 5/7 Cleaned Crab 20/1 Tray .....27

**Crab, Imitation**

Flakes & Chunks 30/1 lb. ....27

Flakes & Chunks 12/2½ lbs. ....27

Imitation Crab Sea Sticks 30/1 lb. ....27

**Crawfish**

Great Fish Crawfish 8/3 lbs. ....29

U/10 ct. Cooked and Seasoned 2/5 lbs. ....29

**Croakers**

5/8 Pan Ready Brazilian.....25

8/16 Pan Ready 10 lb. Box .....25

8/16 Brazilian Leardini 25 lbs. ....25

16/20 Pan Ready Wild Caught 20 lbs. ....25

16/24 Pan Ready 10 lb. Box .....25

16/32 Leardini Pan Ready 25 lbs. ....25

24/32 Pan Ready Uruguay 25 lb.....25

32/Up Pan Ready Uruguay 25 lbs. ....25

**Fish, Breaded**

Schooner Fish Cake USA Wild .....26

Schooner Fish Sticks USA Wild .....26

Schooner Flounder USA Wild .....26



**215-992-0900**

[www.quakervalleyfoods.com](http://www.quakervalleyfoods.com)

**Fish Fillet, Retail Packaged**

Great Fish China Cod Fillet 10/1 lb..... 29  
 Whole Tuna Steak 12/13 oz. .... 29  
 2-3 oz. Tuna Portions 10/1 lbs. .... 29  
 Mahi Mahi Portions 10/1 lbs. .... 29  
 4 oz. Swordfish Steaks 10/1 lbs..... 29

**Flounder Fillets**

3 oz. 1/10 lb. .... 26  
 Whole China Wild ..... 26  
 Great Fish, 15/2 lbs..... 26  
 5 oz. Flounder/Sole 1/10 lb. .... 26

**Frog Legs**

4/6 China 80% 6/5 lbs. .... 26

**Golden Pompano**

600/800 gram 1/40 lbs. bulk..... 28

**Kingfish**

6/8 IVP Kingfish Steak 1/10 lbs. .... 26  
 8/10 oz. Kingfish Steaks ..... 26  
 10/12 Steak 1/20 lbs..... 26  
 5/ Up Whole Kingfish 1/55 lbs. .... 26

**Lobster Tails**

4 oz. .... 28  
 5 oz. .... 28  
 6 oz. .... 28  
 7 oz. .... 28  
 8 oz. .... 28  
 9 oz. .... 28  
 10-12 oz. .... 28  
 12-14 oz. .... 28  
 14-16 oz. .... 28  
 16-20 oz. .... 28  
 20 oz./Up ..... 28

**Mackerel**

Horse 12/28 oz. .... 26  
 Horse 300/500 ..... 26  
 Horse 500/+ Gram ..... 26  
 Norway 400/600 Wild Caught ..... 26

**Mackerel (cont.)**

Norway 400/600 grams.....26  
 Whole 500/700 Pacific .....26

**Mussels**

Chile Plain IVP 10/1 lb. Retail .....28  
 Great Fish Garlic Mussels, 10/1 lb.....28  
 Whole Cooked New Zealand Green Shell.....28  
 Wholey 2 lb. Farmed Chile .....28  
 Wholey 2 lb. Garlic Mussels .....28  
 Wholey Plain 10/1 lb. ....28

**Octopus**

Octo Style Sliced, 10/1 lb. ....25  
 Philippine 4/6 1/30 lb. ....25

**Pollock**

4/6 oz. Pollock Fillet 4/10 lbs. ....27

**Salmon**

6 oz. Atlantic Portions 1/10 lb.....24  
 8 oz. Atlantic Salmon 1/10 lb. ....24  
 Great Fish Salmon Fillet 10/1 lb. ....24  
 Retail Salmon Fillet 10/20 oz.....24

**Salted Fish (Bacalao)**

Buena Ventura 1 lb.....27  
 Gaspé Cod Fillet .....24  
 Smoked Herring 1/10 lbs.....24  
 Fox River 1 lb.....24

**Scallops**

60/80 ct. Bay scallops 12/1/ lb. ....28

**Sea Trout Fillets Skin On**

4/6 Argentinian Wild Skin On .....27  
 6/68 Argentinian Wild Skin On.....27

**Seafood Mix**

Peruvian Mix (No Surimi) 10/1 lb. ....25  
 Wholey Seafood Mix 10/1 lb. ....25

**Shrimp, Block Food Service**

13/15 Asian Farmed White 6/4 lbs. ....24  
 16/20 Farmed Ecuador White 6/4 lbs. ....24



**Shrimp, Block Food Service (cont.)**

21/25 Ecuador Farmed White 6/4 lbs..... 24  
 21/25 Ecuador Farmed White 10/4 lbs..... 24  
 26/30 Ecuador Farmed White 10/4 lbs..... 24  
 31/35 Ecuador Farmed White 10/4 lbs..... 24  
 36/40 Ecuador Farmed White 10/4 lbs..... 24  
 41/50 Ecuador Farmed White 10/4 lbs..... 24

**Shrimp, Breaded**

16/20 Butterfly, 4/3 lbs..... 26  
 Great Fish Jumbo 20/8 oz. .... 26

**Shrimp, Cooked Retail**

100/200 Salad 5/2 lb. .... 24  
 16/20 P&D Tail On 5/2 lb..... 24  
 16/20 Wholey Tail On 5/2 lb. .... 24  
 21/25 Tail On 5/2 lb. .... 24  
 26/30 Tail On 5/2 lb. .... 24  
 20/40 Tail Off 5/2 lb..... 24  
 31/40 Tail On 5/2 lb. .... 24  
 31/40 Wholey Tail On 10/1 lb..... 24  
 41/50 Wholey Tail On 10/1 lb..... 24  
 41/50 Tail On 5/2 lb. .... 24  
 40/60 Tail Off 5/2 lb..... 24

**Shrimp, Head On**

30/40 Ecuador 6/4 lb. .... 24  
 40/50 Ecuador 6/4 lb. .... 24

**Shrimp, Peeled & Deveined Raw**

13/15 Tail On White 5/2 lb. .... 24  
 16/20 Tail Off Ecuador 5/2 lb. .... 24  
 16/20 Wholey Tail On 5/2 lb..... 24  
 16/20 Tail On 5/2 lb..... 24  
 21/25 Tail On 5/2 lbs. .... 24  
 21/25 Tail On 5/2 lbs. .... 24  
 21/25 Tail On 5/2 lbs. .... 24  
 26/30 Tail On 5/2 lbs. .... 24  
 26/30 Tail On 10/2 lbs. .... 24  
 41/50 Tail Off 5/2 lbs. .... 24  
 51/60 Tail Off 5/2 lbs. .... 24

**Shrimp, Raw Retail**

4/6 FW EZ Peel 10/2 lb..... 24  
 11/15 Arg. Red IQF Wild 10/2 lb. .... 24  
 16/20 Arg. Red IQF Wild 10/2 lb. .... 24  
 16/20 EZ Peel 10/2 lbs. .... 24  
 16/20 EZ Peel Wholey 10/1 lb..... 24  
 16/20 EZ Peel Wholey Tail 5/2 lbs..... 24  
 21/25 EZ Peel 10/2 lbs. .... 24  
 26/30 EZ Peel 10/2 lbs. .... 24  
 26/30 EZ Peel Wholey 10/1 lb..... 24  
 31/40 Wholey EZ Peel 10/1 lb..... 24  
 31/40 EZ Peel White 5/2 lbs..... 24

**Snapper Cleaned, Whole**

½ to ¾ Snapper 1/10 lbs..... 28  
 ¾ to 1 Snapper 1/10 lbs..... 28  
 1 to 1½ Snapper 10 lbs. .... 28  
 1 to 2 Snapper 10 lbs. .... 28  
 1½ to 2 Snapper 1/10 lbs. .... 28  
 2 to 3 Snapper 1/10 lbs. .... 28  
 2 to 3 Snapper 1/22 lbs. .... 28  
 3 to 4 Snapper 1/ 22 lbs. .... 28  
 4/Up 1/22 lb..... 28  
 Retail Bagged Snapper 5/12 lb. .... 28  
 Retail Bagged Snapper 10/2 lbs. .... 28

**Snow Crab**

Dungeness Crab Clusters Wild Caught .....25  
 Snow Crab Clusters 5/8 oz. 1/10 lbs.....25  
 Snow Crab Clusters 5/8 oz. 1/30 lbs.....25  
 Snow Crab Clusters 8/10 oz. 1/30 lbs. ....25  
 Snow Crab Clusters 12/Up 1/10 lbs. ....25

**Specialty Seafood**

Dressed Smelts, Peru, Wild Caught, 10/1 lb.....29  
 Raw Conch Meat, 95% Cleaned, 10/5 lb. Retail ..29  
 8 oz. IVP Chilean Sea Bass 1/10 lbs. Portions .....29

**Squid**

Wholey Rings.....25  
 Fish Pride Blue Label Squid Ring.....25



**215-992-0900**

[www.quakervalleyfoods.com](http://www.quakervalleyfoods.com)

**Swai Fillets**

5/7 Swai Fillet IQF 15 lbs..... 28  
 7/9 Swai Fillet IQF 15 lbs..... 28  
 Retail Swai, 10/2 lbs..... 28

**Tilapia Fillets**

3/5 oz. IQF 70% 10 lbs. .... 27  
 5/7 oz. IVP 70% 10 lbs..... 27  
 5/7 oz. IVP Farmed 40% 10 lbs. .... 27  
 7/9 IVP Farmed 100% 10 lbs. .... 27  
 7/9 Tilapia Farmed, 10 lbs. .... 27  
 Great Fish 10/1 lb. Retail Bags ..... 27  
 Great Fish 10/3 lb. Retail Bags ..... 27

**Tilapia Whole**

350/550 70% 1/40 lb. .... 27  
 550/750 Whole Tilapia 40#..... 27  
 550/750 Retail 4/5 lbs. .... 27  
 750/Up Whole Tilapia 40#..... 27  
 950/Up Farmed 70% 1/40 lbs. .... 27  
 Great Fish Whole Tilapia 8/31 lbs. .... 27

**Tuna**

6 oz. Tuns Steak 1/10 lb. .... 29  
 5-8 lbs. Center Cut Tuna loins 1/30 lb..... 29

**Whiting, Headed/Gutted**

Newport 10/5 lb. Retail Box..... 25

**Whiting, Argentina Fillet**

4/6 oz. Skin on Fillet 4/10 lb. .... 25  
 6/8 oz. Skin on Fillet 4/10 lb. .... 25  
 4/6 oz. Skinless Fillet 4/10 lb. .... 25  
 6/8 Skinless Fillet 4/10 lb. .... 25

**Whiting, Retail Fillets**

Great Fish Retail 15/2 lb. .... 25  
 Great Fish Retail 6/5 lb. .... 25  
 Whole Chile Retail 15/2 lb. .... 25  
 Whole Wild Caught Retail, 6/5 lb. .... 25

**Whiting, 10 lb. Box**

Plain Label..... 25  
 Wholey ..... 25

**Turkey .....18**

**Breasts, Frozen**

Boneless Meat..... 18  
 Holden Farms 4/7 No Timer ..... 18  
 8/10 ..... 18  
 10/12..... 18  
 12/14..... 18  
 14/16..... 18  
 16/18..... 18  
 18/20..... 18  
 20 up ..... 18

**Drums, Frozen**

F/S Smoked Tom ..... 18  
 Hen..... 18  
 Tom ..... 18

**Gizzards**

30 lbs. .... 18  
 40 lbs. .... 18

**Ground**

Butterball 85% 2/10 lbs. .... 18  
 Carolina 12/1 lb. .... 18  
 Norbest 92% 10 lbs. .... 18

**Hearts and Liver**

Hearts 40 lbs. .... 18  
 Liver ABF 45 lbs. .... 18

**Necks**

F/S Smoked 30 lbs. .... 18  
 Hen 30 lbs. .... 18  
 Prestage Halal 30 lbs. .... 18  
 Sensenig All Natural ..... 18  
 Tom 22 lbs..... 18  
 Tom 30 lbs..... 18

**Tails**

Tom 30 lbs..... 18  
 F/S Smoked 30 lbs. .... 18  
 Hen All Natural 10 lbs..... 18

**2701 Red Lion Road · Philadelphia, PA 19154**



215-992-0900

www.quakervalleyfoods.com



**Tenders**

Frozen ..... 17

**Thighs**

Bone In..... 18

Boneless..... 18

Halal Boneless..... 18

**Whole, Frozen**

Honeysuckle 26/28 ..... 18

Honeysuckle 28/30 ..... 18

Jennie-O 10/14 ..... 18

Jennie-O 12/14 ..... 18

Jennie-O 14/16 ..... 18

Jennie-O 16/18 ..... 18

Jennie-O 18/20 ..... 18

Sensenig 8/10 ..... 18

Sensenig 10/12 ..... 18

Northern Pride 16/20 ..... 18

**Wings, Frozen**

Exceldor Her V-Wing..... 18

Drumettes ..... 18

F/S Smoked..... 18

Granny Her V-Wing..... 18

Hen Whole..... 18

Jennie-O Hen V-Wing 2 Joint ..... 18

Tom V-Wing..... 18

Tom Whole ..... 18

# We Deliver Connecticut to Virginia!



- **Pennsylvania**

Wayne County to the southern state border and  
Cumberland County to the eastern state border

- **New Jersey**

- **Delaware**

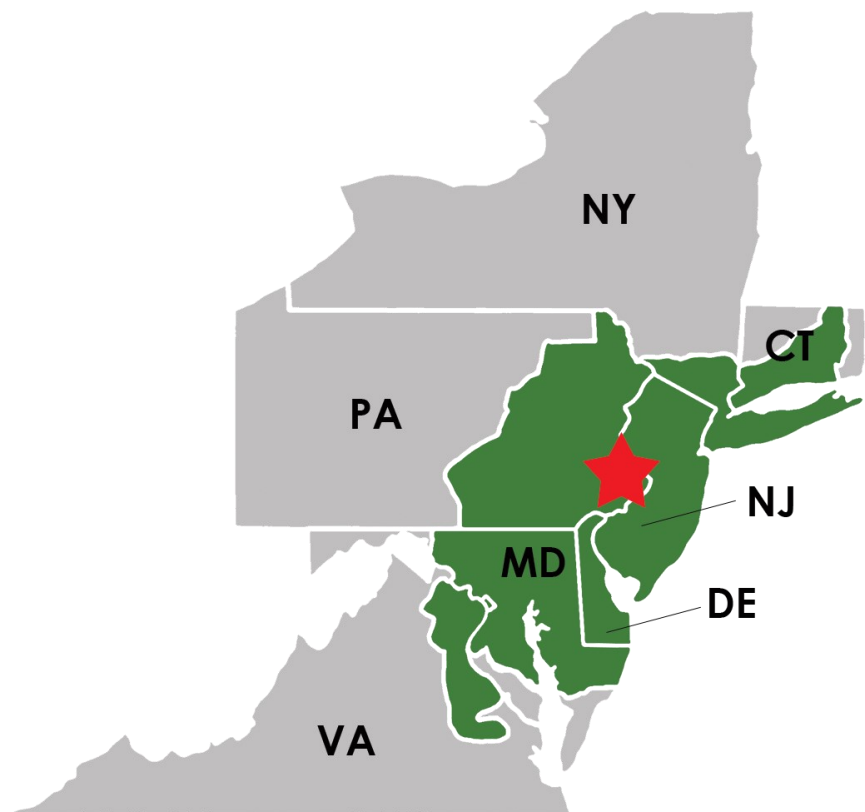
- Parts of:

**Connecticut**

**New York**

**Maryland**

**Virginia**



## 215-992-0900

[sales@quakervalleyfoods.com](mailto:sales@quakervalleyfoods.com) | [www.quakervalleyfoods.com](http://www.quakervalleyfoods.com)

Orders placed by 5:00 PM will ship the following day!



2701 Red Lion Road, Philadelphia, PA 19154



# Customer Pick Up!

*A convenient alternative to delivery*



**215-992-0900**

[sales@quakervalleyfoods.com](mailto:sales@quakervalleyfoods.com)

**Perfect for  
orders that  
don't meet  
our delivery  
minimum!\***

Orders placed by 5:00 PM can be picked up the following morning!

Pickup hours: Monday through Friday, 6:00 AM - 10:00 AM

**Visit Us Today!**

2701 Red Lion Road, Philadelphia, PA 19154

[www.quakervalleyfoods.com](http://www.quakervalleyfoods.com)



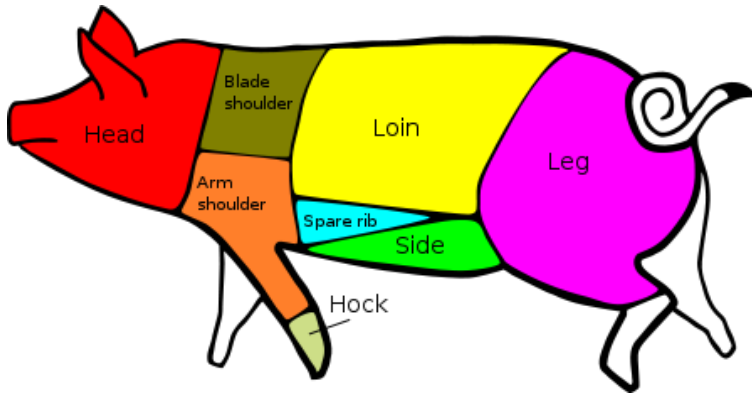
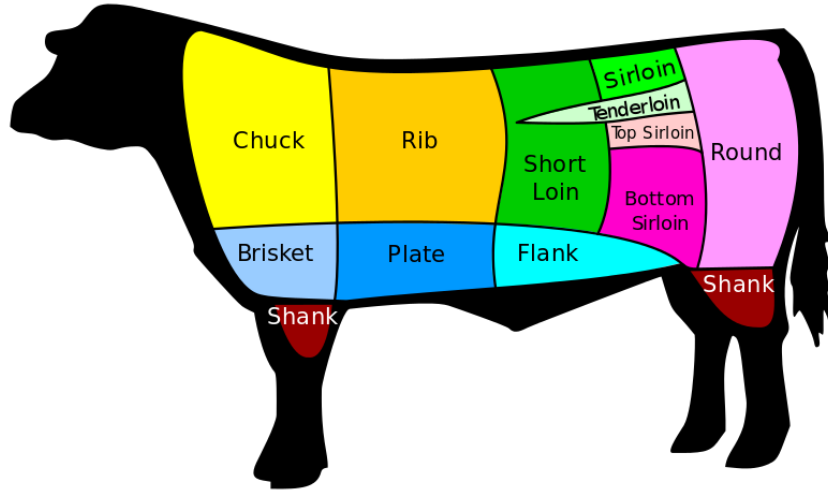
\*10 case minimum

# Cuts of Meat

## Beef

5

Begins on Page



## Pork

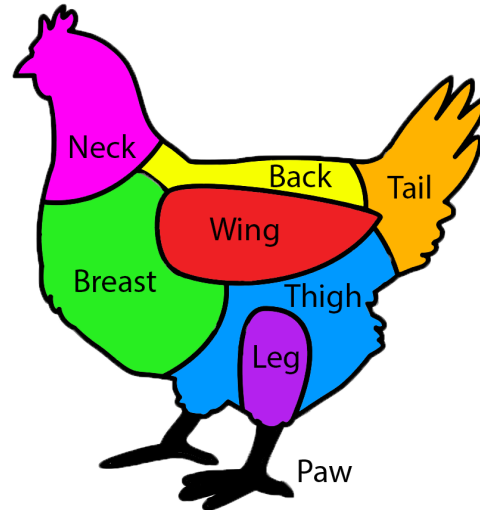
10

Begins on Page

## Chicken

14

Begins on Page



**215-992-0900**

[www.quakervalleyfoods.com](http://www.quakervalleyfoods.com)

[sales@quakervalleyfoods.com](mailto:sales@quakervalleyfoods.com)

