



QUAKER **FOODS**
VALLEY

Seafood Catalog



215-992-0900

quakervalleyfoods.com
sales@quakervalleyfoods.com

Important!

Product availability and product numbers are subject to change.
Please speak with your sales representative before placing your order.



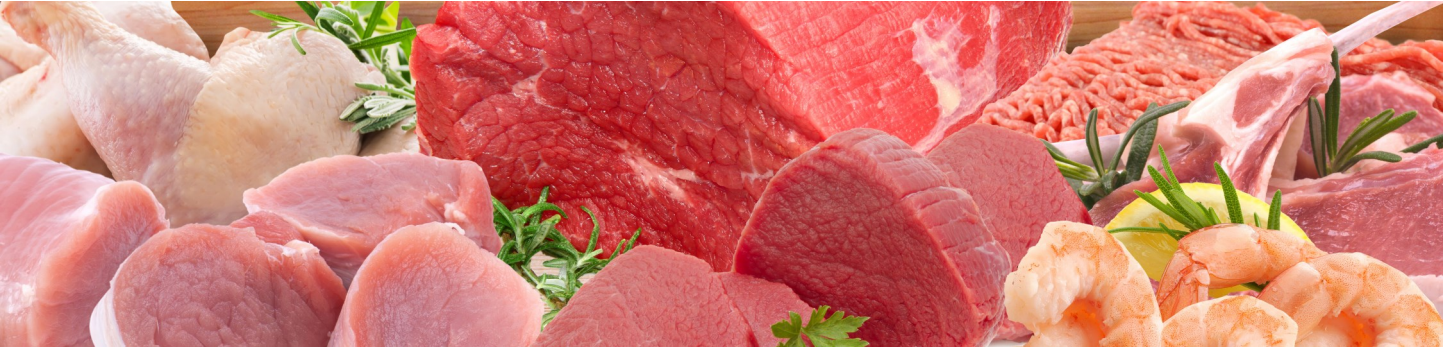
Follow Us

Delivering Personalized Service

Since 1975



Welcome to Quaker Valley Foods!



Quaker Valley Foods is a full-line food distributor, handling over 3,000 fresh and frozen perishable and non-perishable items.

We specialize in the distribution of Beef, Pork, Chicken, Turkey, Seafood, Deli Products, Food Service Items, Lamb, Goat, Mutton, Veal, and Ethnic Items.



Utilizing a fleet of over 40 vehicles, Quaker Valley Food services thousands of customers from Connecticut to Virginia. In order to best service our customers, we provide next day delivery—Monday through Saturday—to wholesalers, jobbers, independent retail and wholesale food stores, restaurants, and larger supermarket groups.



2701 Red Lion Road · Philadelphia, PA 19154

215-992-0900

www.quakervalleyfoods.com



Why Do Business With Us?



- Pennsylvania-based, and Family Owned Since 1975
- Personalized, Dependable Service

- 24 Hour Turnaround: Order Up Until 5 pm for Next Day Delivery
- Hassle-Free, No-Fault Returns
- Customer pickup available



- Competitive Pricing Including Items to Support Your Ad
- We Stock Over 3,000 Items at All Times

- We Care About Your Business and Will Do All We Can to Help You Grow & Succeed!



Pat Veasey, President & Wayne Hudis, CEO

2701 Red Lion Road · Philadelphia, PA 19154

Local, Regional and National Brands. Over 200 Vendors!



Seafood

Seafood

- Superior brands such as Wholey, Leardini, Newport, Fox River, Matlaw’s, Depoe Bay, Great Fish, and Schooner
- Quaker Valley is one of the largest importers and distributors of Croaker and Whiting in the U.S.



Available Seafood Products

Cooked Shrimp	Whiting Fillets	Croakers (Pan Ready)	Tilapia Fillets
Raw Shrimp	Whiting (Headed & Gutted)	Frog Legs	Tilapia Whole
Retail Shrimp	Seafood Mix (1 lb. Retail)	Squid	Retail Tilapia Fillets
Peeled Shrimp	Crab Cakes	Octopus	Snapper Whole (Cleaned)
Crawfish	Sea Trout Fillets	Flounder & Sole Fillets	Snapper Fillet
Snow Crab Clusters	Mackerel	Breaded Fish Portions	Mussels (Black Shell & Green Shell)
Dungeness Clusters	Horse Mackerel	Pollock	Mussels (Plain & Garlic)
Pasteurized Crab Meat	Kingfish (Whole)	Scallops (IQF, Retail)	Clams (Stuffed)
Imitation Crab	Kingfish Steaks (IVP)	Lobster Tails (Warm Water)	Swai Fillets
Salted Fish (Bacalao)	Salmon	Retail Ready Seafood Fillets	Catfish Fillets

Seafood

Cooked Retail Shrimp

1 lb. & 2 lbs. Bags


Description	Item No.
16/20 P&D Tail On 5/2 lb.	5246720
16/20 Wholey Tail On 5/2 lb.	5246816
21/25 Tail On 5/2 lb.	5246860
26/30 Tail On 5/2 lb.	5244370
20/40 Tail Off 5/2 lbs.	5246740
31/40 Tail On 5/2 lb.	5246832
31/40 Wholey Tail On 10/1 lb.	5246841
41/50 Wholey Tail On 10/1 lb.	5246151
41/50 Tail On 5/2 lb.	5246851
40/60 Tail Off 5/2 lb.	5244590
100/200 Salad 5/2 lb.	5247501

Raw Retail Shrimp

1 lb. & 2 lbs. Bags


Description	Item No.
4/6 Fresh Water EZ Peel 10/2 lb.	5247950
11/15 Arg. Red IQF Wild 10/2 lb.	5244220
16/20 Arg. Red IQF Wild 10/2 lb.	5244320
16/20 EZ Peel 10/2 lbs.	5244520
16/20 EZ Peel Wholey 10/1 lb.	5244720
16/20 EZ Peel Wholey 5/2 lb.	5244820
21/25 EZ Peel 10/2 lbs.	5244750
26/30 EZ Peel 10/2 lbs.	5244530
26/30 EZ Peel Wholey 10/1 lb.	5244330
31/40 Wholey EZ Peel 10/1 lb.	5244140
31/40 EZ Peel 10/2 lb.	5244825

Block Food Service Shrimp (Shell On)



Description	Item No.
13/15 Asian Farmed White 6/4 lb.	5244120
16/20 Ecuador Farmed White 6/4 lb.	5244620
21/25 Ecuador Farmed White 6/4 lb.	5244925
21/25 Ecuador Farmed White 10/4 lb.	5244130
26/30 Ecuador Farmed White 10/4 lb.	5244150
31/35 Ecuador Farmed White 10/4 lb.	5243714
36/40 Ecuador Farmed White 10/4 lb.	5243640
41/50 Ecuador Farmed White 10/4 lb.	5245160

Peeled & Deveined Raw Shrimp

1 lb. & 2 lbs. Bags


Description	Item No.
13/15 Tail On White 5/2 lb.	5244728
16/20 Tail Off Ecuador 5/2 lb.	5244325
16/20 Wholey Tail On 5/2 lb.	5243932
16/20 Tail On 5/2 lb.	5246231
21/25 Tail On Ecuador 5/2 lb.	5246950
21/25 Tail Off 5/2 lb.	5244727
26/30 Tail On 5/2 lb.	5244160
26/30 Tail Off 5/2 lb.	5244726
41/50 Tail Off 5/2 lb.	5246862
51/60 Tail Off 5/2 lb.	5246840

Salmon



Description	Item No.
6 oz. Atlantic Portions 1/10 lb.	5014309
8 oz. Atlantic Portions 1/10 lb.	5001208
Great Fish Salmon Fillet 10/1 lb.	5014519
Retail Salmon Fillet 10/20 oz.	5002377



Head-On Shrimp

Description	Item No.
30/40 Champmar Ecuador 6/4 lb.	5244931
40/50 Champmar Ecuador 6/4 lb.	5244941

Seafood

Snow Crab & Dungeness

Description	Item No.
Snow Crab Clusters 5/8 oz. 1/10 lb.	5004410
Snow Crab Clusters 5/8 oz. 1/30 lb.	5004458
Snow Crab Clusters 8/10 oz. 1/30 lb.	5003580
Snow Crab Clusters 12/up oz. 1/10 lb.	5003107
Dungeness Clusters Wild Caught	5004485-95



Argentina Whiting Fillet

Description	Item No.
4/6 oz. Skin on Fillet 4/10 lb.	5029346
6/8 oz. Skin on Fillet 4/10 lb.	5029368
4/6 oz. Skinless Fillet 4/10 lb.	5029246
6/8 oz. Skinless Fillet 4/10 lb.	5029268



Squid

Description	Item No.
Wholey Rings IQF 10/1 lb.	5001269

Retail Whiting Fillets



Description	Item No.
Great Fish Retail 15/2 lb.	5029115
Great Fish Retail 6/5 lb.	5029038
Wholey Chile Retail 15/2 lbs.	5029715
Wholey Wild Caught Retail 6/5	5029865



Octopus (Pulpo)

Description	Item No.
Octo Style Sliced 10/1 lb.	5017171
4/6 Philippine 1/30 lb.	5017146

Seafood Mix

Description	Item No.
Peruvian Mix (no surimi) 10/1 lb.	5017191
Wholey Seafood Mix 10/1 lb.	5001469



Whiting Headed & Guttled



Description	Item No.
Newport 10/5 lb. Retail Box	5029103



Croakers

Description	Item No.
5/8 Pan Ready Brazilian	5006016
8/16 Pan Ready 10 lb. Box	5008016
8/16 Brazilian Leardini 25 lb.	5007225
16/24 Pan Ready 10 lb. Box	5001624
16/32 Leardini Pan Ready 25 lb.	5005232
24/32 Pan Ready 25 lb.	5002132
32/Up Pan Ready 25 lb.	5002123

Whiting 10 lb. Box

Description	Item No.
Plain Label	5029399
Wholey	5029382

Sea Trout Fillets

Description	Item No.
4/6 Argentine Wild Skin On	5023146
6/8 Argentine Wild Skin On	5023168



Seafood

Mackerel



Description	Item No.
Whole 500/700 gm Pacific	5014957
Norway 400/600 Wild Caught	5014246
Norway 400/600 gm	5014351
Horse Mackerel 12/28 oz.	5014656
Horse Mackerel 300/500	5014656
Horse Mackerel 500/Up	5014856

Kingfish



Description	Item No.
6/8 IVP Kingfish Steak 1/10 lb.	5014322
8/10 oz. Kingfish Steaks 1/10 lb.	5014425
5/+ Whole Kingfish 1/55 lbs.	5012101
10/12 oz. Kingfish Steak 1/10 lb.	5014426



Frog Legs

Description	Item No.
4/6 China 80% 6/5 lbs.	5500046

Flounder Fillets



Description	Item No.
Wholely China Wild	5007125
Great Fish 15/2 lbs.	5007115
5 oz. IQF Flounder/ Sole 1/10 lb.	5007127



Breaded Shrimp

Description	Item No.
16/20 Butterfly 4/3 lb.	5001230
Great Fish Jumbo 20/8 oz.	5001232

Crab Cakes



Description	Item No.
Wholey Retail 5 pack	5002102
Foodservice Pack 2/5 lb.	5001301

Breaded Fish



Description	Item No.
Schooner Fish Cake USA	5001202
Schooner Fish Stick USA	5001203
Schooner Flounder USA	5001204

Breaded Clams & Scallops



Description	Item No.
Stuffed Clams 12/20 oz. 9-Pack	5001211
Matlaw's Stuffed Scallops 12/8 oz. 9pk	5002018

Seafood

Pasteurized (Refrigerated) Crabmeat 12/1 lb.



Description	Item No.
Colossal Lump	5001191
Jumbo (HAANI)	5001193
Lump (HAANI)	5001195
Super Lump	5001194
Claw Meat (Pelagicus)	5001198
Jumbo Crab Frozen 24/1 lb.	5022230
Lump Crab Frozen 24/1 lb.	5022230

Cleaned Crab



Description	Item No.
Jaiba 5/7 Cleaned Crab 20/1 lb. Tray	5004108

Imitation Crab



Description	Item No.
Imitation Crab Sea Sticks 30/1 lb.	5011211
Flakes & Chunks 12/2½ lbs.	5011212
Flakes & Chunks 30/1 lb.	5011113

Tilapia Whole



Description	Item No.
350/550 70% 1/40 lb.	5790355
550/750 Whole Tilapia 40#	5775575
550/750 Retail 4/5 lbs.	5799450
750/Up Whole Tilapia 40#	5770750
950/Up 70% 1/40 lb.	5790950
Great Fish Whole Tilapia 8/3 lbs.	5029461

Pollock



Description	Item No.
4/6 oz. Pollock Fillet 4/10 lbs.	5707046

Tilapia Fillets



Description	Item No.
3/5 oz. IQF 70% 10 lb.	5709935
3/5 oz. IVP 70% 10 lb.	5707057
5/7 oz. IVP 70% 10 lb.	5707057
5/7 oz. IQF Farmed 70% 10 lb.	5708057
7/9 oz. IVP Farmed 70% 10 lb.	5709979
7/9 oz. IVP Farmed 100% 10 lb.	5029483
Great Fish 10/1 lb. Retail Bags	5029301
Great Fish 10/3 lb. Retail Bags	5029310

Scallops



Description	Item No.
60/80 ct. Bay Scallops 12/1 lb.	5200305

Seafood

Warm Water Lobster Tails

10 lb.



Description	Item No.
4 oz.	5500104
5 oz.	5500105
6 oz.	5500106
7 oz.	5500107
8 oz.	5500108
9 oz.	5500109
10-12 oz.	5500110
12-14 oz.	5500112
14-16 oz.	5500114
16-20 oz.	5500116
20 oz./Up	5500124

Whole Cleaned Snapper



Description	Item No.
½ to ¾ Snapper 1/10 lb.	5014114
¾ to 1 Snapper 1/10 lb.	5014226
1 to 1½ Snapper 1/10 lb.	5014129
1 to 2 Snapper 1/10 lb.	5014775
1½ to 2 Snapper 1/10 lb.	5014611
2 to 3 Snapper 1/10 lb.	5014724
2 to 3 Snapper 1/22lb.	5014223
3 to 4 Snapper 1/22 lb.	5014103
4/Up 1/22 lb.	5015341
Retail Bagged Snapper 5/2 lb.	5014225
Retail Bagged Snapper 10/2 lb.	5015113

Mussels



Description	Item No.
Wholey 2 lbs. Farmed Chile	5016124
Wholey 2 lb. Garlic Mussels	5016127
Wholey Plain 10/1 lb.	5016125
Chile Plain IVP 10/1 lb. Retail	5016327
Great Fish Garlic Butter 10/1 lb. Bags	5016326
Whole Cooked New Zealand Green Shell	5216324

Catfish Fillets



Description	Item No.
Channel Catfish Fillet 5/7 oz. 1/15 lbs.	5001737
Channel Catfish Fillet 7/9 oz. 1/15 lbs.	5001702

Swai Fillets



Description	Item No.
5/7 Swai Fillet IQF 15 lbs.	5001603
7/9 Swai Fillet IQF 15 lbs.	5001602
Retail Swai Fillet 10/2 lbs.	5001611

Salted Fish (Bacalao)



Description	Item No.
Fox River 1 lb.	5101400
Buena Ventura 1 lb.	5101500
Gaspe Cod Fillet	5101200
Smoked Herring 1/10 lb.	5101102

Golden Pompano



Description	Item No.
600/800 gram 40 lbs. bulk	5786080

Seafood

Specialty Seafood



Description

Dressed Smelts Peru Wild Caught 10/1 lb.
Raw Conch Meat 95% Cleaned 10/5 lb. Retail
8 oz. IVP Chilean Sea Bass Portions 1/10 lb.

Item No.

5014201
5029100
5200204

Retail Packaged Fish Fillet



Description

Great Fish China Cod Fillet 10/1 lb.
Wholey Tuna Steak 12/13 oz.
2-3 oz. Tuna Portions 10/1 lb.
Mahi Mahi Portions 10/1 lb.

Item No.

5300304
5300309
5300315
5300415

Tuna



Description

6 oz. Tuna Steak 1/10 lb.
5-8 lbs. Center Cut Tuna Loins 1/30 lb.

Item No.

5014320
5029391



Crawfish

Description

Great Fish Crawfish 8/3 lbs.
U/10 ct. Cooked and Seasoned 2/5 lb.

Item No.

5491018
5491015

We Deliver Connecticut to Virginia!



- **Pennsylvania**

Wayne County to the southern state border and
Cumberland County to the eastern state border

- **New Jersey**

- **Delaware**

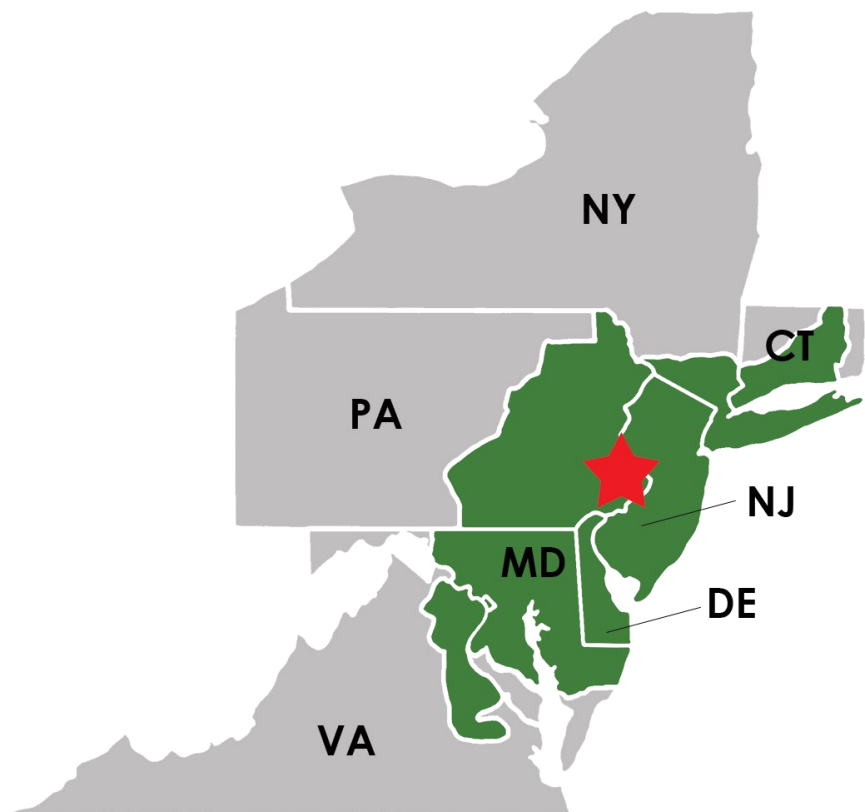
- **Parts of:**

Connecticut

New York

Maryland

Virginia



215-992-0900

sales@quakervalleyfoods.com | www.quakervalleyfoods.com

Orders placed by 5:00 PM will ship the following day!



2701 Red Lion Road, Philadelphia, PA 19154



Customer Pick Up!

A convenient alternative to delivery



215-992-0900

sales@quakervalleyfoods.com

**Perfect for
orders that
don't meet
our delivery
minimum!***

Orders placed by 5:00 PM can be picked up the following morning!

Pickup hours: Monday through Friday, 6:00 AM - 10:00 AM

Visit Us Today!

2701 Red Lion Road, Philadelphia, PA 19154

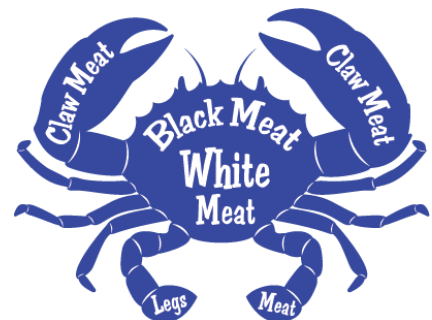
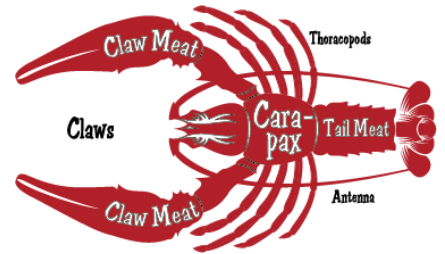
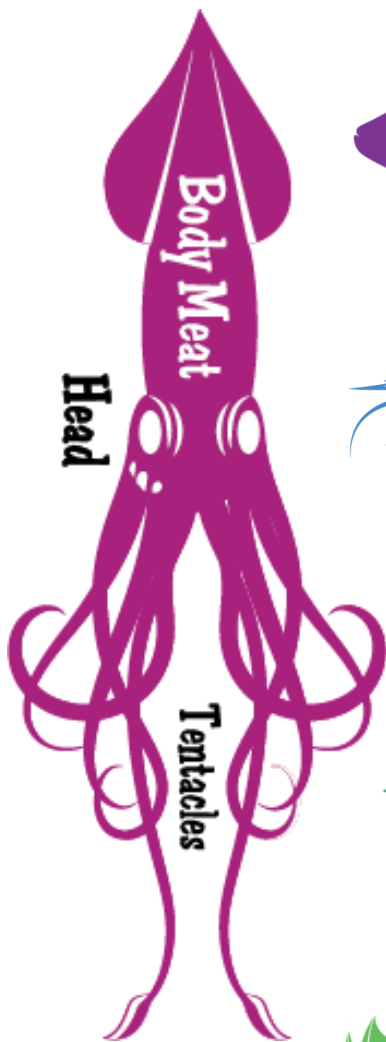
www.quakervalleyfoods.com



*10 case minimum

THE BUTCHER'S GUIDE

• CUTS OF SEAFOOD •



215-992-0900



Quakervalleyfoods.com sales@quakervalleyfoods.com

2701 Red Lion Road Philadelphia, PA 19154

